

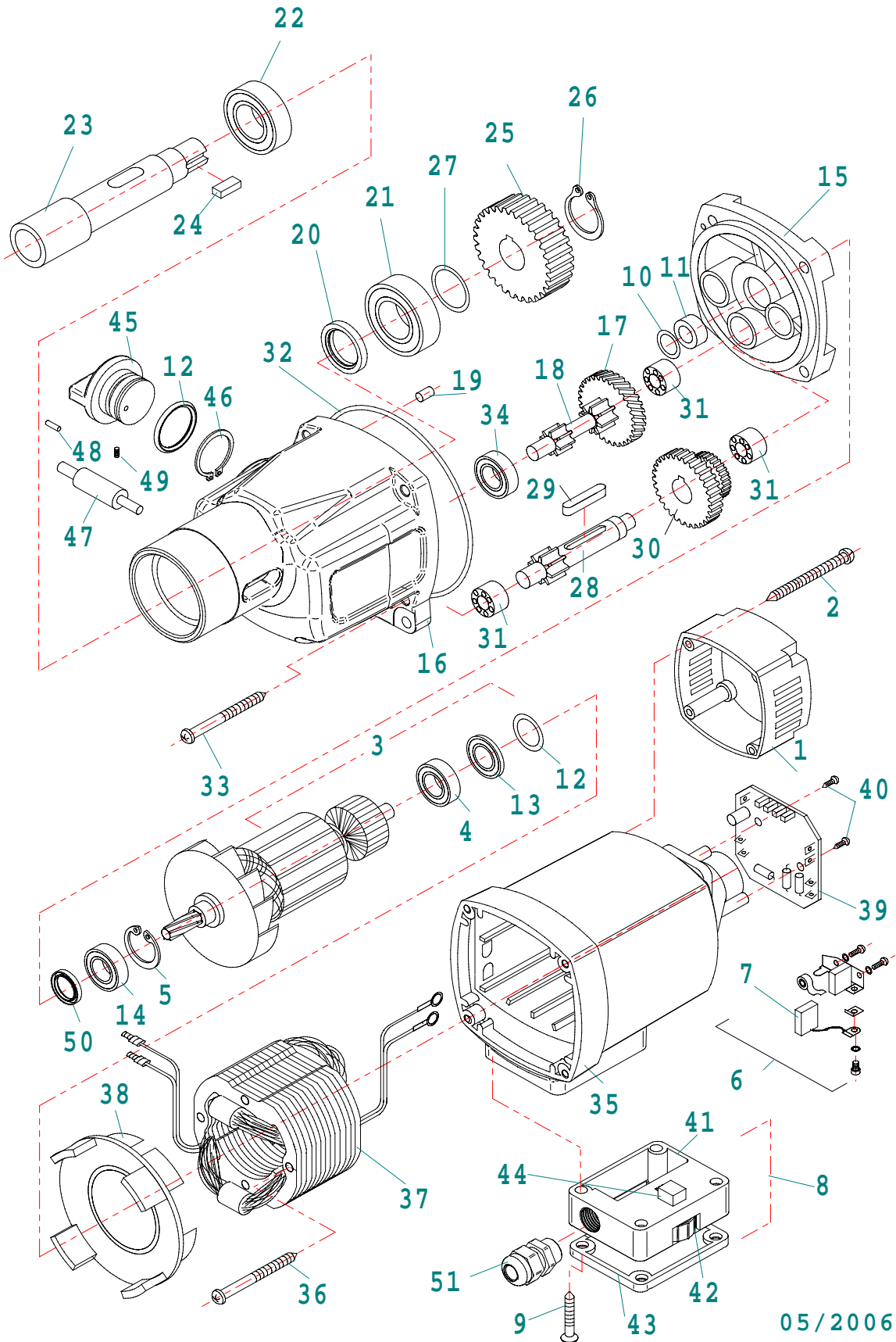
Item No.	Part.-No.	Denomination
1	60 1209 1	Housing 3 holes for 4 screws
2	60 1020 4	Adjustment rail right for 4 screws
3	60 1002 1	Spring washer 6,3
4	60 1001 1	Screw M6 x 16
5	60 1005 4	Magnet (electric) with indicator
6	60 1210 1	Slide
7	60 1011 1	Screw M6 x 25
8	60 1008 1	Tooth track
9	60 1009 1	Screw M6 x 20
10	60 1021 1	Shaft for gear wheel
11	60 1022 1	Disc for shaft for gear wheel
12	60 1023 1	Screw gear wheel M6 x 16
13	60 1024 2	Handle rod with knob
14	60 1211 1	Cooling tank
15	60 1212 1	Fixing ball
16	60 1003 1	Fixing nut M5
17	60 1004 1	Adjusting screw M5 for slide
18	60 1019 4	Guida rail (1 set right/left) to be glued
19	60 1213 1	Cable gland PG 9 / PG 9
20	70 1006 1	Earth screw
21	60 1214 1	Quick change coupling
22	ZSS200S	Cooling tube
23	70 1003 1	Mains cable gland PG 11
24	70 1004 1	Connection cable 220 - 240 V with plug
24 A	70 1041 1	Connection cable 220 - 240 V with English plug
24 B	70 1005 1	Connection cable 110 V (plug on demand)
25	60 1215 1	PC board with 3 relais 230 V
25 A	60 1216 1	PC board with 3 relais 110 V
26	70 1013 1	Fuse 2A, 5 x 20, 250 V F, DIN 41 661
27	60 1217 1	Indicator with cable
28	70 1010 1	LED display for indicator red/green
29	70 1008 1	Screw for front plate M4 x 6
30	70 1104 1	Switch plate front side
31	70 1014 1	Magnet switch
32	70 1080 1	Actuator 220 V
32 A	70 1093 1	Actuator 110 V
33	70 1048 1	Rocker switch left/right
34	60 1218 1	Cable protection
35	60 1219 1	Motor cable

<b>Item No.</b>	<b>Part.-No.</b>	<b>Denomination</b>
36	ZSS 200	KEYLESS ZSS 200
37	50 0485 1	Motor MAB 485 complete 230 V
37 A	50 0486 1	Motor MAB 485 complete 110 V
38	60 1046 1	Screw M6 x 30
39	70 1105 1	Side plate
40	70 1106 2	Switch plate complete with PC board 3 relais 230 V
40 A	70 1107 2	Switch plate complete with PC board 3 relais 110 V

Item No.	Part.-No.	Denomination
1	60 1209 1	Housing 3 holes for 4 screws
2	60 1020 4	Adjustment rail right for 4 screws
3	60 1002 1	Spring washer 6,3
4	60 1001 1	Screw M6 x 16
5	60 1005 4	Magnet (electric) with indicator
6	60 1210 1	Slide
7	60 1011 1	Screw M6 x 25
8	60 1008 1	Tooth track
9	60 1009 1	Screw M6 x 20
10	60 1021 1	Shaft for gear wheel
11	60 1022 1	Disc for shaft for gear wheel
12	60 1023 1	Screw gear wheel M6 x 16
13	60 1024 2	Handle rod with knob
14	60 1211 1	Cooling tank
15	60 1212 1	Fixing ball
16	60 1003 1	Fixing nut M5
17	60 1004 1	Adjusting screw M5 for slide
18	60 1019 4	Guida rail (1 set right/left) to be glued
19	60 1213 1	Cable gland PG 9 / PG 9
20	70 1006 1	Earth screw
21	60 1214 1	Quick change coupling
22	ZSS200S	Cooling tube
23	70 1003 1	Mains cable gland PG 11
24	70 1004 1	Connection cable 220 - 240 V with plug
24 A	70 1041 1	Connection cable 220 - 240 V with English plug
24 B	70 1005 1	Connection cable 110 V (plug on demand)
25	60 1215 1	PC board with 3 relais 230 V
25 A	60 1216 1	PC board with 3 relais 110 V
26	70 1013 1	Fuse 2A, 5 x 20, 250 V F, DIN 41 661
27	60 1217 1	Indicator with cable
28	70 1010 1	LED display for indicator red/green
29	70 1008 1	Screw for front plate M4 x 6
30	70 1104 1	Switch plate front side
31	70 1014 1	Magnet switch
32	70 1080 1	Actuator 220 V
32 A	70 1093 1	Actuator 110 V
33	70 1048 1	Rocker switch left/right
34	60 1218 1	Cable protection
35	60 1219 1	Motor cable

Item No.	Part.-No.	Denomination
36	ZSS 200	KEYLESS ZSS 200
37	50 0485 1	Motor MAB 485 complete 230 V
37 A	50 0486 1	Motor MAB 485 complete 110 V
38	60 1046 1	Screw M6 x 30
39	70 1105 1	Side plate
40	70 1106 2	Switch plate complete with PC board 3 relais 230 V
40 A	70 1107 2	Switch plate complete with PC board 3 relais 110 V

# MAB 485



05/2006

Item No.	Part.-No.	Denomination
1	50 1069 1	Cap for motor housing
2	50 1058 1	Screw 4,8 x 45
3	50 1339 1	Armature 230 V
3 A	50 1340 1	Armature 110 V
4	50 1006 1	Ball bearing 608 ZZ
5	50 1027 1	Circlip ring 28/1,2
6	50 1056 1	Carbon brush holder
7	50 1057 1	Carbon brush
8	50 1251 1	Housing for potentiometer complete
9	50 1249 1	Screw M5 x 40
10	50 1299 1	Circlip ring SW 10
11	50 1341 1	Seal bush
12	50 1059 1	Disc 22 x 2,5
13	50 1078 1	Magnet ring
14	50 1250 1	Ball bearing 6001 2RS
15	50 1342 1	Shield plate
16	50 1343 1	Gear box case
17	50 1344 1	Intermedium gear wheel 34 teeth
18	50 1345 1	Shaft with 2 gear wheels
19	50 1029 1	Pin 4 x 12
20	50 1346 1	Shaft seal 20 x 35 x 7
21	50 1061 1	Ball bearing 6203 2RS
22	50 1119 1	Ball bearing 6005 2RS
23	50 1347 1	Spindle
24	50 1075 1	Spring A5 x 5 x 12
25	50 1062 1	Spindle gear wheel 45 teeth
26	50 1072 1	Circlip ring 15/1
27	50 1053 1	Disc 15/22 x 0,2
28	50 1041 1	Shaft for gear wheel 13 teeth
29	50 1050 1	Spring A5 x 5 x 28
30	50 1063 1	Gear wheel block 34/40 teeth
31	50 1035 1	Needle bearing HK 0810
32	50 1348 1	O-Ring 85 x 1,78
33	50 1023 1	Screw 4,8 x 50
34	50 1007 1	Ball bearing 608
35	50 1070 1	Housing for motor complete
36	50 1003 1	Screw 3,9 x 60
37	50 1349 1	Field coil 220 - 240 V
37 A	50 1350 1	Field coil 110 V

Item No.	Part.-No.	Denomination
38	50 1064 1	AIR conducting ring
39	50 1084 1	PC board for motor 220 V
39 A	50 1084 1	PC board for motor 110 V
40	50 1079 1	Screw - 2 pieces
41	50 1088 1	Housing for potentiometer
42	50 1086 1	Adjustment wheel (blue) for speed control 2 V
43	50 1089 1	Cover for housing
44	50 1087 1	Potentiometer for speed control 250 kOhm
45	50 1355 1	Gear change
46	50 1356 1	Circlip ring 26/1,2
47	50 1357 1	Clutch
48	50 1358 1	Pin 3m 6 x 10
49	50 1359 1	Locking pin
50	50 1360 1	Shaft seal KEIV 15 x 21 x 3
51	60 1213 1	Gland PG 9 / PG 9
	50 1351 1	Litz wire of actuator
	50 1352 1	Variable resistor 100 kOhm
	50 1353 1	Litz wire of switch
	50 1354 1	Litz wire of carbon brush holder