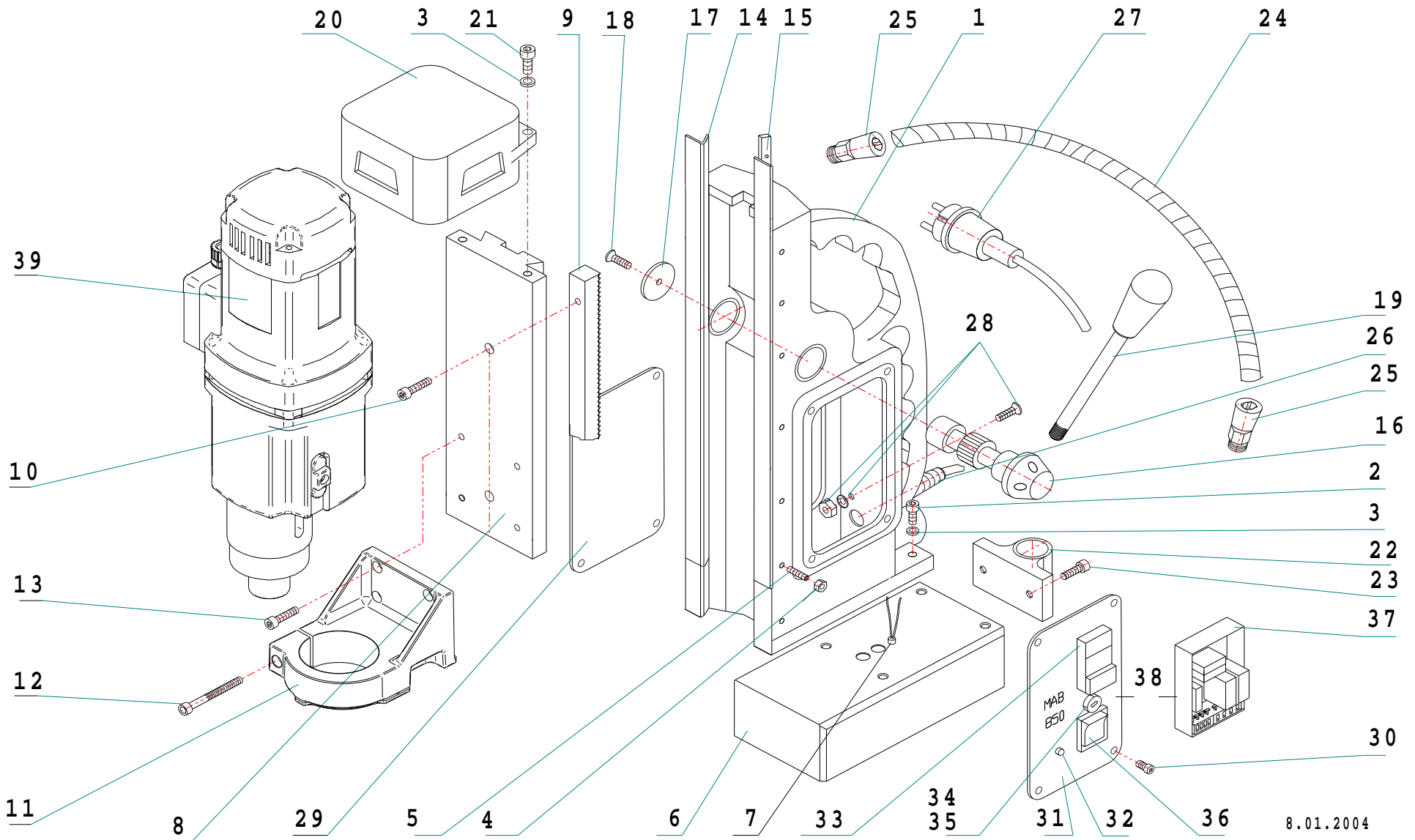


MAB 850

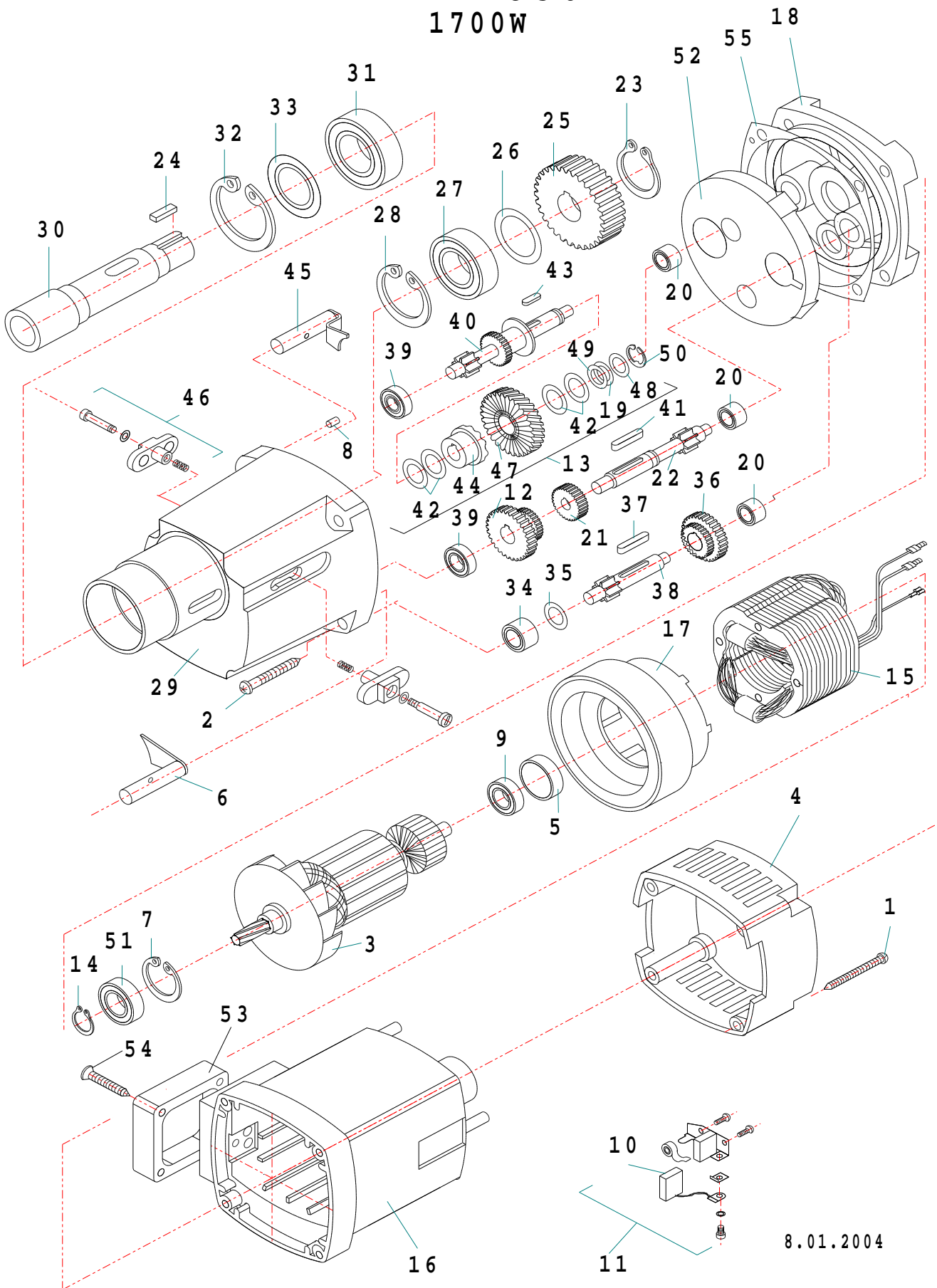


Item No.	Part.-No.	Denomination
1	60 1041 2	Housing with holes M8 without groove
1 A	60 1041 1	Housing with groove
2	60 1062 1	Screw M8x25
2 A	60 1011 1	Screw M6x25
3	60 1057 1	Washer 8,3
3 A	60 1002 1	Spring washer 6,3
4	60 1003 1	Fixing nut M5
5	60 1042 1	Fixing screw M5x25 for slide
6	60 1043 2	Magnet electric with indicator M8
6 A	60 1043 1	Magnet electric without indicator M6
7	60 1006 1	Magnet indicator
8	60 1067 1	Dovetail carriage, asymmetrical, length: 339 mm width:100 mm hole distance 66 mm
8 A	60 1069 1	Dovetail carriage symmetrical length: 336 mm width:100 mm hole distance 40 mm
9	60 1045 1	Tooth rack length: 280 mm
10	60 1046 1	Screw for tooth rack M6x30
11	60 1047 1	Gear holder for motor
12	60 1048 1	Screw for gear holder M6x55
13	60 1001 1	Screw M6x16
14	60 1049 3	Guide rail (1 set right/left) to be glued
14 A	60 1049 2	Guide rail (1 set right/left) with groove
15	60 1050 2	Adjustment rail right
15 A	60 1050 1	Adjustment rail right fitting to 14A
16	60 1053 1	Shaft for gear wheel
17	60 1022 1	Disc for tooth rack
18	60 1023 1	Screw for gear wheel M6x16
19	60 1054 2	Handle rod with knob
20	60 1065 1	Cover for motor black
21	60 1056 1	Screw for cover M8x35
22	60 1058 1	Magnet release assembly
23	60 1059 1	Screw M8x16
23 A	60 1001 1	Screw M6x16
24	70 1000 1	Cable protecting tube
24 A	70 1001 1	Cable protection tube complete with gland and cable
25	70 1002 1	Gland PG 9
26	70 1003 1	Mains cable gland PG 11
27	70 1004 1	Connection cable 220 - 240 V with plug
27 A	70 1041 1	Connection cable 220 - 240 V with English plug
27 B	70 1005 1	Connection cable 110 V (plug on demand)
28	70 1006 1	Earth screw

Item No.	Part.-No.	Denomination
29	70 1066 1	Side plate
30	70 1008 1	Screw for side plate M4x6
31	70 1067 2	Switch plate front side for indicator (from January 2002)
32	70 1010 1	LED display for Indicator red/green (from January 2002)
33	70 1011 1	Actuator
34	70 1012 1	Fuse holder
35	70 1013 1	Fuse 2A, 5x20, 250 V F DIN 41 661
36	70 1014 1	Magnet switch
37	70 1015 2	PC board with 3 Relais 230 V
37 A	70 1068 2	PC board with 3 Relais 110 V
38	70 1069 2	Switch plate complete with switches and PC board 230 V
38 A	70 1070 2	Switch plate complete with switches and PC board 110 V
39	50 0850 1	Motor MAB 850 complete 230 V
39 A	50 0851 1	Motor MAB 850 complete 110 V

MAB 850

1700W



8.01.2004

Item No.	Part.-No.	Denomination
1	50 1058 1	Screw 4,8 x 45
2	50 1091 1	Screw 5,5 x 38
3	50 1199 1	Armature 220 - 240 V
3 A	50 1200 1	Armature 110 V
4	50 1153 1	Cap for motor housing
5	50 1156 1	Bearing cap
6	50 1201 1	Bolt for coupling 2
7	50 1027 1	Circlip ring 28/1,2
8	50 1148 1	Pin 5x16
9	50 1101 1	Ball bearing 6000
10	50 1158 1	Carbon brush 6,2 x 16
11	50 1160 1	Carbon brush holder
12	50 1202 1	Gear wheel block 1
13	50 1203 1	Clutch
14	50 1071 1	Circlip ring 11/1
15	50 1204 1	Field coil 220 - 240 V
15 A	50 1205 1	Field coil 110 V
16	50 1163 1	Motor housing
17	50 1109 1	Air conducting ring
18	50 1206 1	Shield plate
19	50 1111 1	Disc
20	50 1035 1	Needle bearing HK 0810
21	50 1207 1	Intermediate gear wheel
22	50 1208 1	Intermediate shaft 2
23	50 1115 1	Circlip ring 24/1,2
24	50 1116 1	Spring B6x6x20
25	50 1117 1	Spindle gear wheel
26	50 1118 1	Washer 25/35x0,1
27	50 1119 1	Ball bearing 6005 2RS
28	50 1120 1	Circlip ring 47/1,75
29	50 1209 1	Gear box case
30	50 1122 1	Spindle
31	50 1123 1	Ball bearing 6006 2Z
32	50 1124 1	Circlip ring 55/2
33	50 1125 1	Shim for ball bearing 6006
34	50 1126 1	Needle bearing RNA 4900
35	50 1127 1	Shim for needle bearing RNA 4900
36	50 1210 1	Gear wheel block 2
37	50 1188 1	Spring A6x6x40
38	50 1212 1	Intermediate shaft 3

Item No.	Part.-No.	Denomination
39	50 1130 1	Ball bearing 6000 2Z
40	50 1213 1	Intermediate shaft 1
41	50 1050 1	Spring A5x5x28
42	50 1133 1	Spring 28/12,2x1
43	50 1134 1	Spring A5x5x10
44	50 1135 1	Part of coupling
45	50 1214 1	Bolt for clutch 1
46	50 1052 1	Gear change complete
47	50 1215 1	Clutch center wheel
48	50 1138 1	Pressure disks
49	50 1139 1	Disk 12
50	50 1141 1	Circlip ring 9
51	50 1008 1	Ball bearing 6001 2Z
52	50 1216 1	Shaft seal for grease chamber
53	50 1217 1	Cable cover
54	50 1218 1	Screw M6x35
55	50 1164 1	Gear box gasket