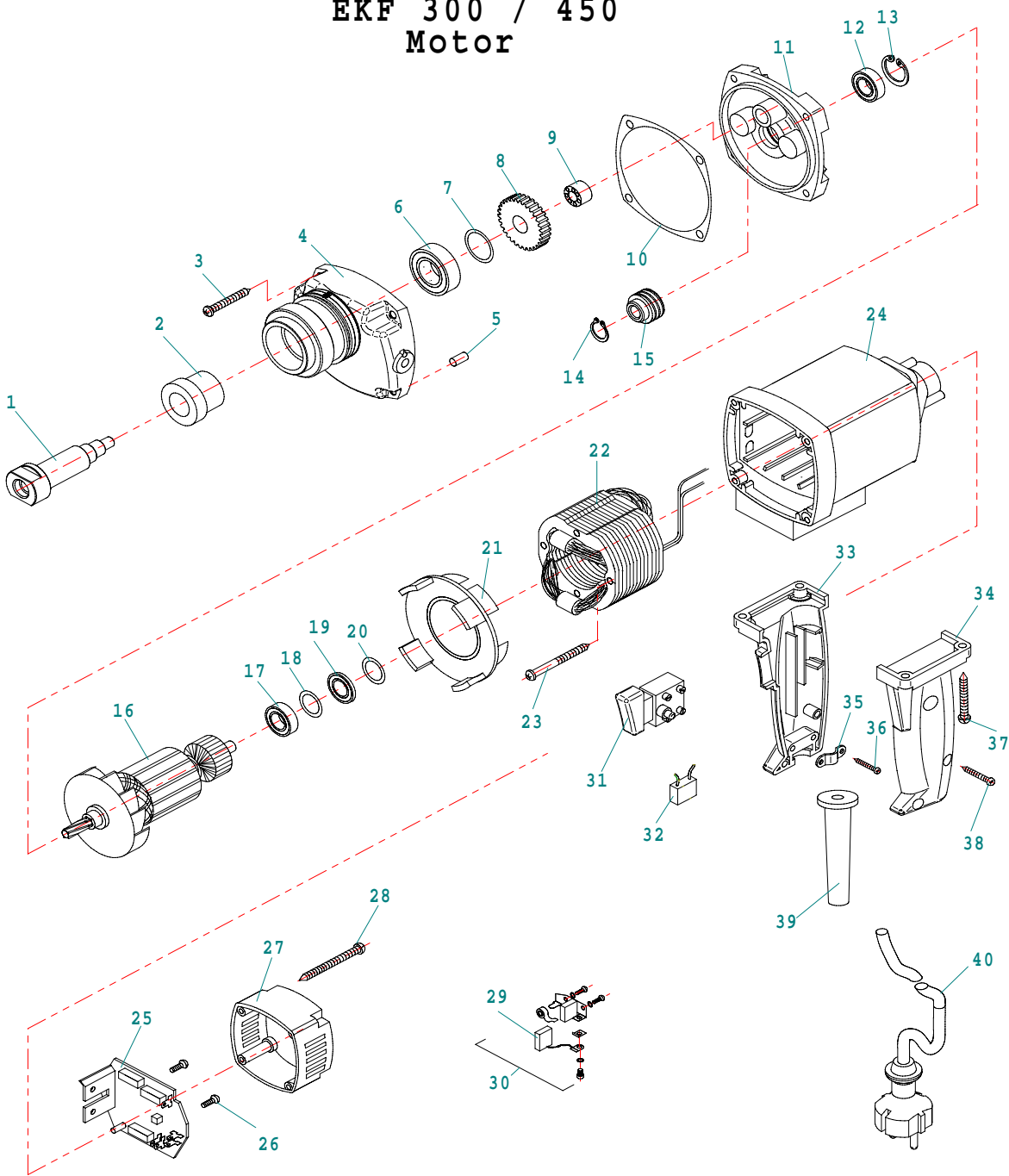


Item No.	Part.-No.	Denomination
1	50 1286 1	Electric motor
2	50 1287 1	O-Ring RDR DIN 3770-52 x 3
3	50 1288 1	Handle complete
4	50 1289 1	Spring ring DIN 128 - A10 - FSt
5	50 1290 1	Screw DIN 933 M10 x 16
6	70 1200 1	Milling tool 45° without guide bush and reversible discs
6 A	70 1201 1	Milling tool 30° without guide bush and reversible discs
7	SHM 200	High speed inserts
8	70 1202 1	Screw SS-3,0-1
9	70 1203 1	Guide bush 45°
9 A	70 1204 1	Guide bush 30°
10	70 1205 1	Ball bearing DIN 625-1 628/6-2Z (2 pieces)
11	70 1206 1	Nut DIN 985-M5
12	ZFR 450	Milling tool 45° wih guide bush without high speed inserts
12 A	ZFR 300	Millin tool 30° with guide bush without high speed inserts
13	50 1291 1	Screw DIN 913 M3 x 4
14	70 1207 1	Scale
15	70 1208 1	Block head
16	70 1209 1	Star wheel screw
17	70 1210 1	Trip disc
18	50 1292 1	Screw M4 x 8

EKF 300 / 450 Motor



Item No.	Part.-No.	Denomination
1	50 1260 1	Spindle
2	50 1261 1	Axial Needle
3	50 1262 1	Screw HC 4,8 x 38
4	50 1263 1	Gear box
5	50 1029 1	Pin 4 x 12
6	50 1264 1	Ball bearing 6002 2RS
7	50 1265 1	Disc 12 / 18 x 0,2
8	50 1266 1	Spindle gear wheel 22 teeth
9	50 1035 1	Needle bearing HK 0810
10	50 1267 1	Gear box seal
11	50 1268 1	Shield
12	50 1008 1	Ball bearing 6001 2Z
13	50 1027 1	Circlip ring 28 / 1,2
14	50 1071 1	Circlip ring 11 / 1
15	50 1269 1	Worm seal 1
16	50 1270 1	Armature 220 V
16 A	50 1271 1	Armature 110 V
17	50 1006 1	Ball bearing 608 2Z
18	50 1174 1	Washer of pressboard
19	50 1272 1	Magnet disc
20	50 1059 1	Disc 22 x 2,5
21	50 1064 1	AIR conducting ring
22	50 1273 1	Field coil 220 V
22 A	50 1274 1	Field coil 110 V
23	50 1003 1	Screw C 3,9 x 60
24	50 1070 1	Motor housing, blue
25	50 1275 1	PC board for motor 220 V
25 A	50 1276 1	PC board for motor 110 V
26	50 1277 1	Screw HC 2,9 x 13
27	50 1069 1	Cap for motor
28	50 1058 1	Screw HC 4,8 x 45
29	50 1457 1	Carbon brush 6,3 x 12,5 x 18
30	50 1056 1	Carbon brush holder complete
31	50 1278 1	Mounting switch
32	50 1279 1	Decoupling capacitor
33	50 1280 1	Handle
34	50 1281 1	Handle
35	50 1282 1	Clamping piece for pass release
36	50 1002 1	Screw HC 4,2 x 13

Item No.	Part.-No.	Denomination
37	50 1283 1	Screw HC 4,8 x 22
38	50 1284 1	Screw HC 4,2 x 16
39	50 1285 1	Cable grommet
40	70 1004 1	Connection cable