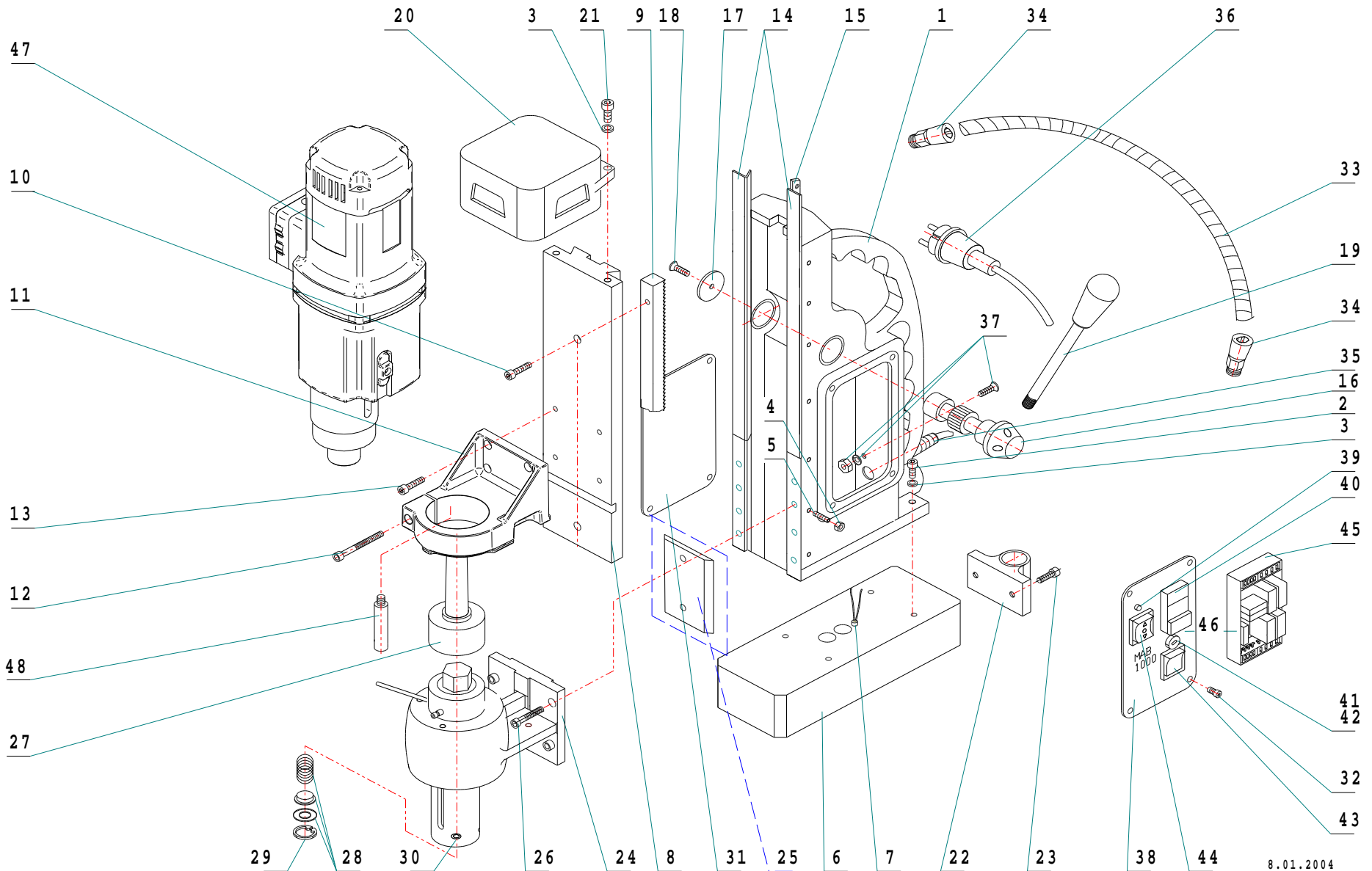


MAB 1000
Antriebseinheit MAB 800.4E 1800W



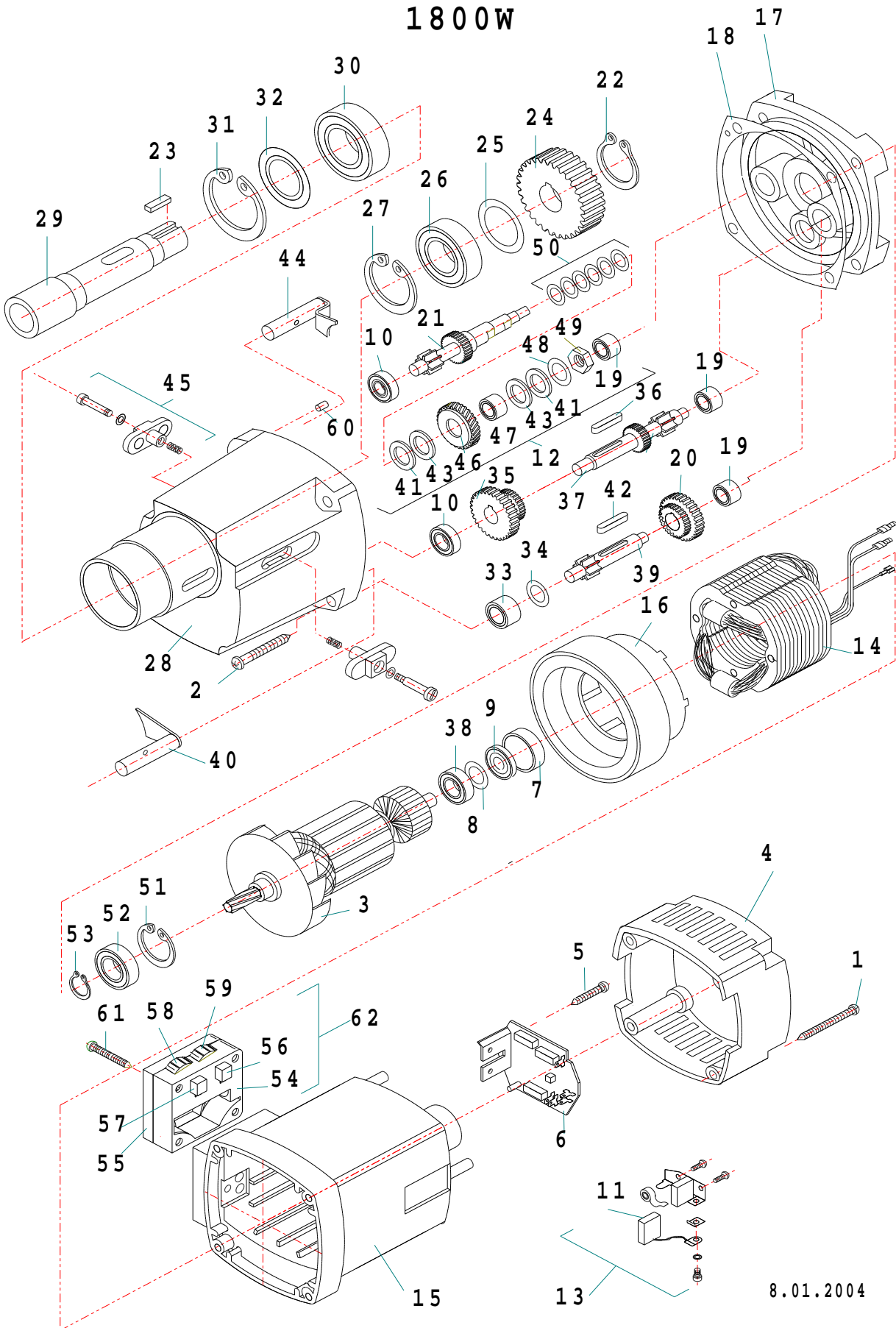
Item No.	Part.-No.	Denomination
1	60 1041 3	Housing (closed back side)
1 A	60 1041 2	Housing M8 without groove
1 B	60 1041 1	Housing with groove
2	60 1062 1	Screw M8x25
2 A	60 1011 1	Screw M6x25
3	60 1057 1	Washer 8,3
3 A	60 1002 1	Washer 6,3
4	60 1003 1	Nut M5
5	60 1042 1	Adjustment screw M5x25 for slide
6	60 1070 2	Magnet electric with indicator M8
6 A	60 1070 1	Magnet electric M6 without indicator
7	60 1006 1	Magnet indicator
8	60 1071 2	Dovetail carriage, asymmetrical, length: 428 mm width: 100 mm
8 A	60 1071 1	Dovetail carriage symmetrical length: 404 mm width: 100 mm
9	60 1045 1	Tooth rack length: 280 mm
10	60 1046 1	Screw for tooth rack M6x30
11	60 1047 1	Gear holder for motor
12	60 1048 1	Screw for gear holder M6x55
13	60 1001 1	Screw M6x16
14	60 1049 3	Guide rail (1 set right/left) to be glued
14 A	60 1049 2	Guide rail (1 set right/left) with groove
14 B	60 1049 1	Guide rail (1 set right/left) without clamp fixing
15	60 1050 2	Adjustment rail right brass
15 A	60 1050 1	Adjustment rail right steel
16	60 1053 1	Tooth rack
17	60 1022 1	Disk for tooth rack
18	60 1023 1	Screw for tooth rack M6x16
19	60 1054 2	Handle rod with knob
20	60 1065 1	Cover for motor black
21	60 1056 1	Screw for cover M8x35
22	60 1058 1	Detaching aid with ball and spring
23	60 1059 1	Screw M8x16
23 A	60 1001 1	Screw M6x16
24	60 1072 2	Counter holder industrial arbor with 4 holes for housing fixing
24 A	60 1072 1	Counter holder industrial arbor with 2 holes for housing fixing
25	60 1073 1	Fixing plate for counter holder
26	60 1074 1	Screw for counter holder
27	60 1075 1	CM3 arbor with Allen screw
28	60 1076 1	Spring with washer

Item No.	Part.-No.	Denomination
29	60 1077 1	Circlip ring
30	60 1078 1	Allen screw M12x12 for core drill fixing
31	70 1071 1	Side plate
32	70 1008 1	Srew for side plate M4x6
33	70 1000 1	Cable protecting tube
33 A	70 1054 1	Cable protection tube complete with gland and cable
34	70 1002 1	Gland PG 9
35	70 1003 1	Mains cable gland PG 11
36	70 1004 1	Connection cable 220 - 240 V with plug
36 A	70 1041 1	Connection cable 220 - 240 V with English plug
36 B	70 1005 1	Connection cable 110 V (plug on demand)
37	70 1006 1	Earth screw
38	70 1072 2	Switch plate front side for indicator (from January. 2002)
39	70 1010 1	LED display for Indicator red/green (from January 2002)
39 A	70 1033 1	LED - display green
40	70 1011 1	Actuator
41	70 1012 1	Fuse holder
42	70 1013 1	Fuse 2A, 5x20, 250 V F DIN 41 661
43	70 1014 1	Magnet switch
44	70 1048 1	Rocker switch left / right (from 05/97)
44 A	70 1027 1	Switch right/left
44 B	70 1095 1	Operating device - spare part for switch right/left
44 C	70 1096 1	Shaft for switch right/left
45	70 1049 2	PC board with 5 Relais 230 V
45 A	70 1050 2	PC board with 5 Relais 110 V
45 B	70 1034 1	PC board 230 V for switch right/left
46	70 1073 2	Switch plate complete with switches and PC board 230 V
46 A	70 1074 2	Switch plate complete with switches and PC board 110 V
47	50 0800 2	Motor MAB 800.4E complete 230 V
47 A	50 0810 2	Motor MAB 800.4E complete 230 V
48	60 1108 1	Fixing pin

MAB 800.4E

MAB840
1800W

MAB1000



8.01.2004

Item No.	Part.-No.	Denomination
1	50 1058 1	Screw 4,8 x 45
2	50 1091 1	Screw 5,5 x 38
3	50 1172 1	Armature 220 - 240 V
3 A	50 1173 1	Armature 110 V
4	50 1153 1	Cap for motor housing
5	50 1095 1	Screw 3,9 x 9,5
6	50 1154 1	PC board for motor 220 V
6 A	50 1155 1	PC board for motor 110 V
7	50 1156 1	Bearing cap
8	50 1174 1	Pressboard washer
9	50 1157 1	Magnet ring
10	50 1101 1	Ball bearing 6000
11	50 1158 1	Carbon brush 6,2 x 16
12	50 1175 1	Clutch
13	50 1160 1	Carbon brush holder, complete
14	50 1176 1	Field coil 220 - 240 V
14 A	50 1177 1	Field coil 110 V
15	50 1163 1	Motor housing
16	50 1109 1	Air conducting ring
17	50 1178 1	Shield plate
18	50 1164 1	Gear box gasket
19	50 1035 1	Needle bearing HK 0810
20	50 1179 1	Gear wheel block 2
21	50 1180 1	Intermediate shaft 1
22	50 1115 1	Intermediate shaft 1
23	50 1116 1	Spring B6x6x20
24	50 1181 1	Spindle gear wheel
25	50 1118 1	Shim 25/35x0,1
26	50 1119 1	Ball bearing 6005 2RS
27	50 1120 1	Circlip ring 47/1,75
28	50 1182 1	Gear box case
29	50 1122 1	Spindle
30	50 1123 1	Ball bearing 6006 2Z
31	50 1124 1	Circlip ring 55/2
32	50 1125 1	SHIM for ball bearing 6006
33	50 1126 1	Needle bearing RNA 4900
34	50 1127 1	Shim for needle bearing RNA 4900
35	50 1183 1	Gear wheel block 1

Item No.	Part.-No.	Denomination
36	50 1090 1	Spring A5x5x20
37	50 1184 1	Intermediate shaft 2
38	50 1130 1	Ball bearing 6000 2Z
39	50 1185 1	Inermediate shaft 3
40	50 1186 1	Bolt for clutch 2
41	50 1187 1	Spacer (2 pieces)
42	50 1188 1	Spring A6x6x40
43	50 1189 1	Spacer (2 pieces)
44	50 1190 1	Bolt for clutch 1
45	50 1052 1	Gear change complete
46	50 1191 1	Clutch center wheel
47	50 1192 1	Cylinder bearing 1210T
48	50 1193 1	Washer 25x12,2x0,9
49	50 1194 1	Nut
50	50 1195 1	Washer 28x14,2x1,5
51	50 1027 1	Circlip ring 28/1,2
52	50 1008 1	Ball bearing 6001 2Z
53	50 1071 1	Circlip ring 11/1
54	50 1166 1	Housing for potentiometer
55	50 1167 1	Cover for potentiometer housing
56	50 1140 1	Potentiometer for speed control 100 kOhm 2V
57	50 1168 1	Potentiometer for power control 1 kOhm 7V
58	50 1170 1	Adjusting wheel red for power control 7V
59	50 1086 1	Adjusting wheel blue for speed control 2V
60	50 1148 1	Pin 5x16
61	50 1197 1	Screw 6x45
62	50 1198 1	Potentiometer housing complete