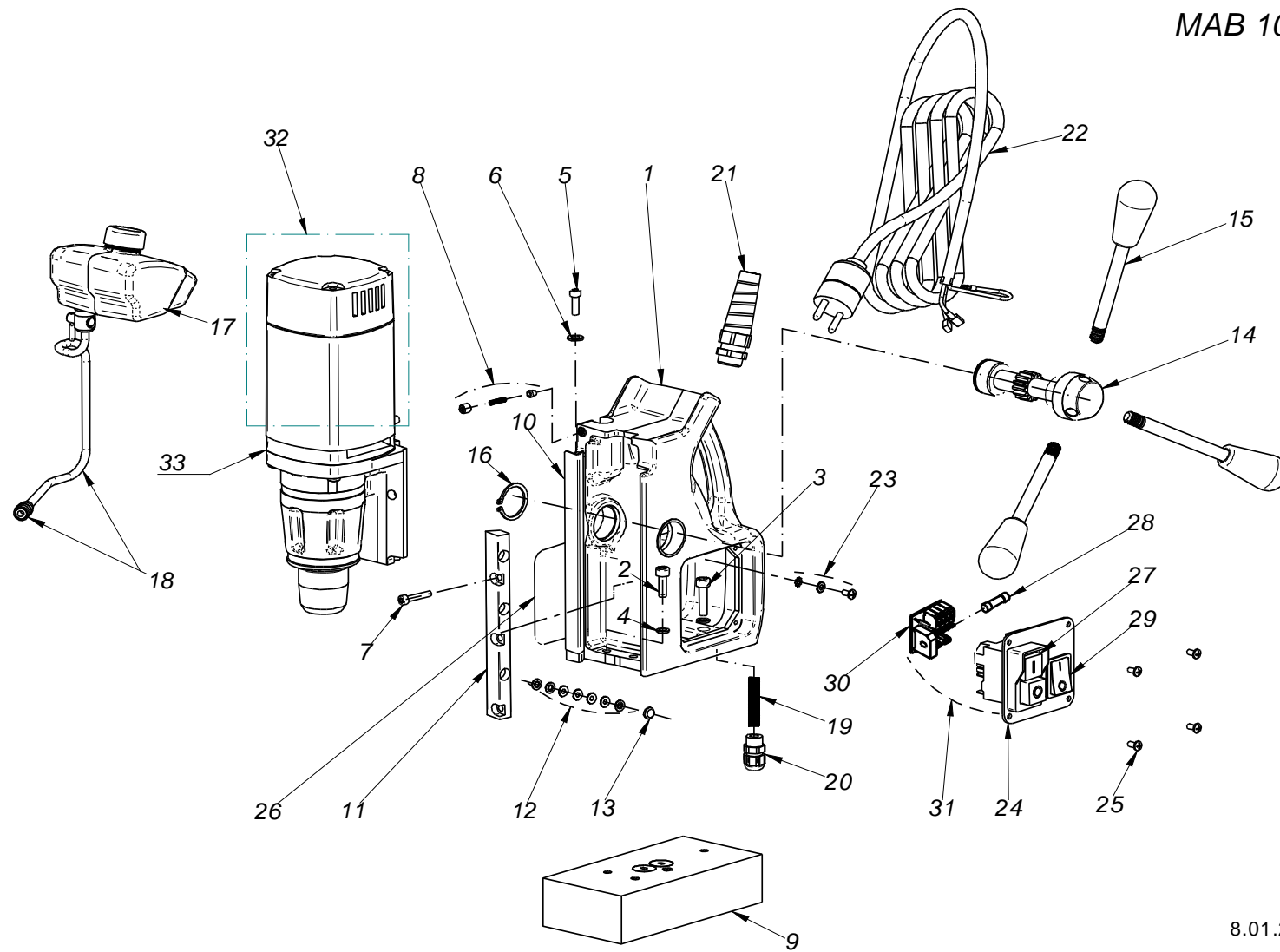
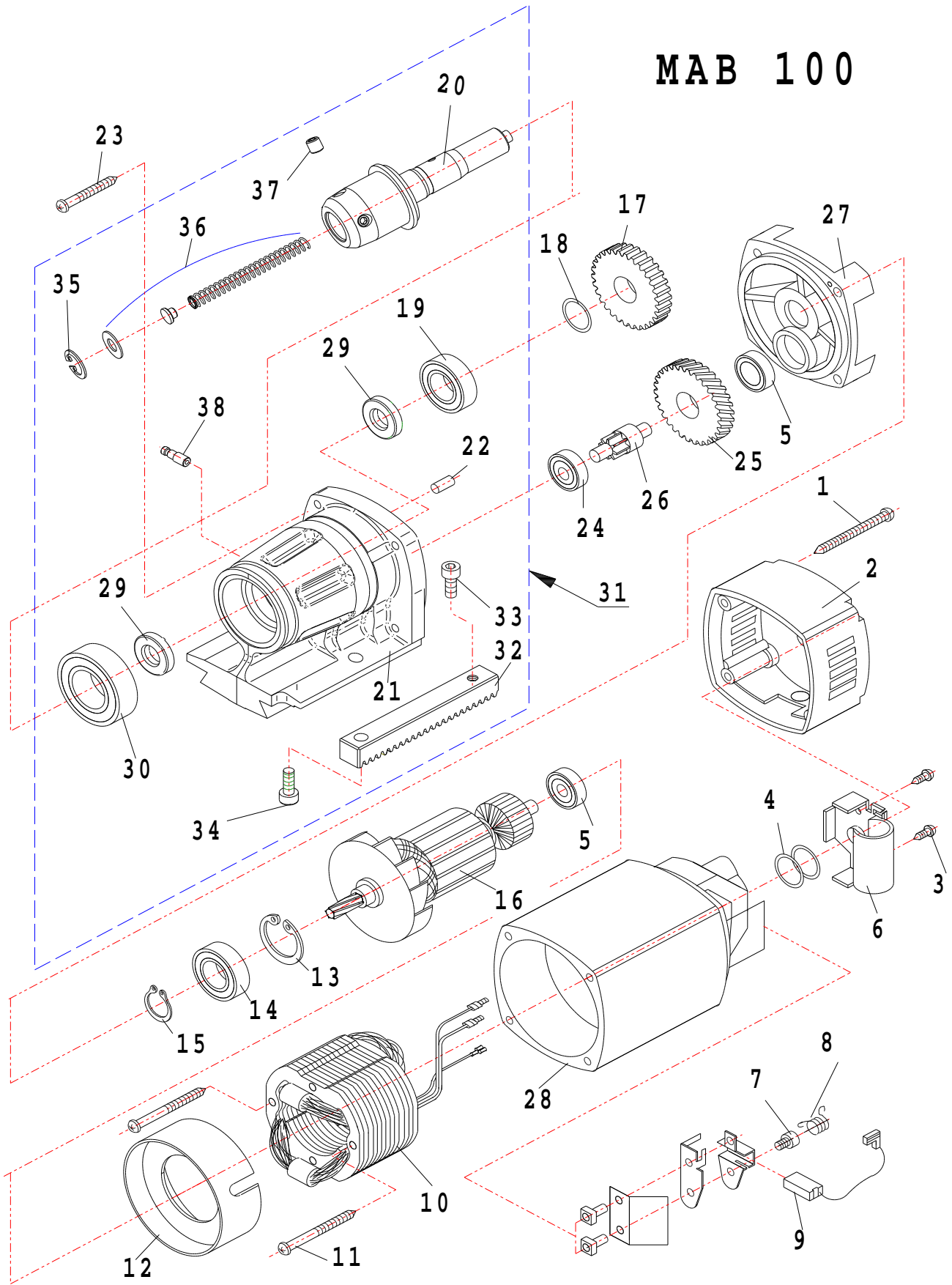


MAB 100



Item No.	Part.-No.	Denomination
1	60 1081 1	Housing
2	60 1001 1	Screw M6x16
3	60 1009 1	Screw M6x20
4	60 1002 1	Spring washer 6,3
5	60 1082 1	Screw for stroke limiter M5x16
6	60 1083 1	Washer for stroke limiter 6,3
7	60 1084 1	Screw M5 for slide
8	60 1085 1	Fixing for coolant supply complete
9	60 1086 1	Magnet (electric)
10	60 1087 1	Guide rail
11	60 1088 1	Adjustment rail (right)
12	60 1089 1	Cup spring for adjustment rail (7 pieces)
13	60 1090 1	Washer for adjustment rail
14	60 1091 1	Shaft for gear wheel
15	60 1092 1	Handle rod with knob
16	60 1093 1	Circlip ring for gear wheel 28
17	60 1094 1	Coolant reservoir
18	60 1095 1	Coolant tube with quick coupling
19	70 1075 1	Cable protecting
20	70 1076 1	Cable gland PG 7
21	70 1003 1	Mains cable gland PG 11
22	70 1004 1	Connection cable 220 - 240 V complete with plug
22 A	70 1041 1	Connection cable 220 - 240 V complete with English plug
22 B	70 1005 1	Connection cable 110 V (plug on demand)
23	70 1077 1	Earth screw complete
24	70 1078 1	Switch plate front side
25	70 1008 1	Screw for front plate M4x6
26	70 1079 1	Side plate
27	70 1080 1	Actuator 220 V
27 A	70 1093 1	Actuator 110 V
28	70 1013 1	Fuse 2A, 5x20, 250 V F, DIN 41 661
29	70 1014 1	Magnet switch
30	70 1081 1	PC board 110 V + 230 V
31	70 1082 1	Switch plate complete with switches and PC board 230 V
31 A	70 1094 1	Switch plate complete with switches and PC board 110 V
32	70 1083 1	Upper motor part (without gear box) MAB 100 230 V
32 A	70 1084 1	Upper motor part (without gear box) MAB 100 110 V
33	50 0100 1	Motor MAB 100 complete - 230 V
33 A	50 0110 1	Motor MAB 100 complete - 110 V

# MAB 100



8.01.2004

Item No.	Part.-No.	Denomination
1	50 1023 1	Screw 4,8 x 50
2	50 1242 1	Cap for motor housing
3	50 1002 1	Screw 4,2 x 13
4	50 1004 1	Washer 16 x 22 x 0,5
5	50 1006 1	Ball bearing 608 2Z
6	50 1013 1	Holder for capacitor
7	50 1000 1	Screw
8	50 1001 1	Spring
9	50 1014 1	Carbon brush 6,3 x 10 x 20
10	50 1015 1	Field coil 220 - 240 V
10 A	50 1016 1	Field coil 110 V
11	50 1003 1	Screw 3,9 x 60
12	50 1025 1	Air conducting ring
13	50 1027 1	SEEGER circlip ring 28/1,2
14	50 1008 1	Ball bearing 6001 2Z
15	50 1026 1	SEEGER circlip ring 10/1
16	50 1017 1	Armature 220 - 240 V
16 A	50 1018 1	Armature 110 V
17	50 1009 1	Spindle gear 40 teeth
18	50 1005 1	Washer 17 x 24 x 0,2
19	50 1024 1	Ball bearing 6003 2RS
20	50 1243 1	Spindle
21	50 1244 1	Gear box case
22	50 1029 1	Pin 4x12
23	50 1022 1	Srew 4,8 x 40
24	50 1007 1	Ball bearing 608
25	50 1010 1	Intermedium gear wheel 34 teeth
26	50 1012 1	Pinion shaft 8 teeth
27	50 1028 1	Shield plate
28	50 1245 1	Housing for motor complete with carbon brush holder
29	50 1246 1	Seal ring
30	50 1247 1	Ball bearing 6004 2Z
31	50 1248 1	Gear cover with spindle and tooth rack (without shaft)
32	60 1079 1	Tooth rack
33	60 1001 1	Srew M6x16
34	60 1009 1	Screw M6x20
35	60 1016 1	Circlip ring D 28
36	60 1080 1	Spring with washer
37	60 1018 1	Allen screw M8x8 for direct arbor

Item No.	Part.-No.	Denomination
38	ZSS 200N	Brass nippel for quick change coupling ZSS 200