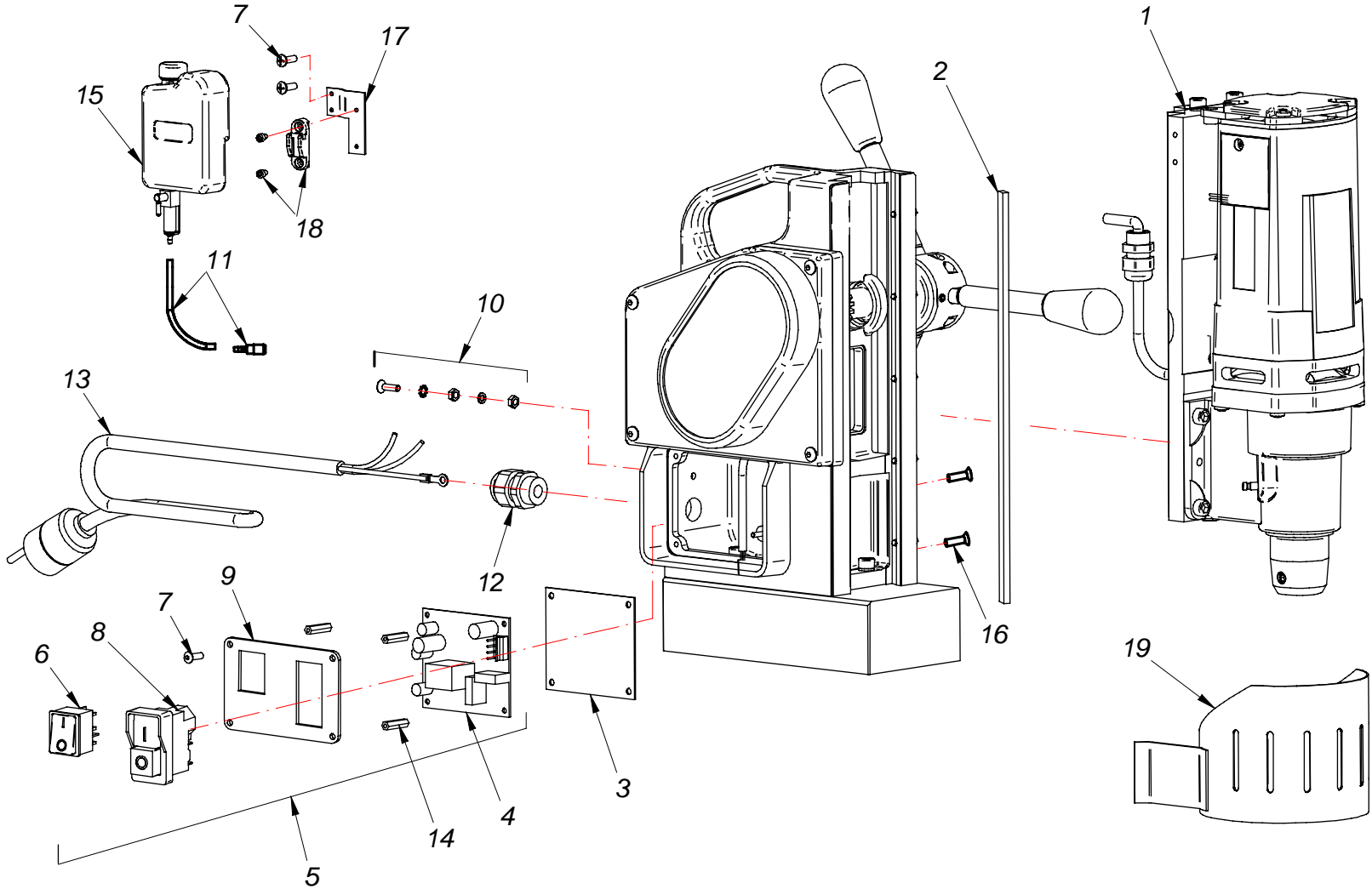
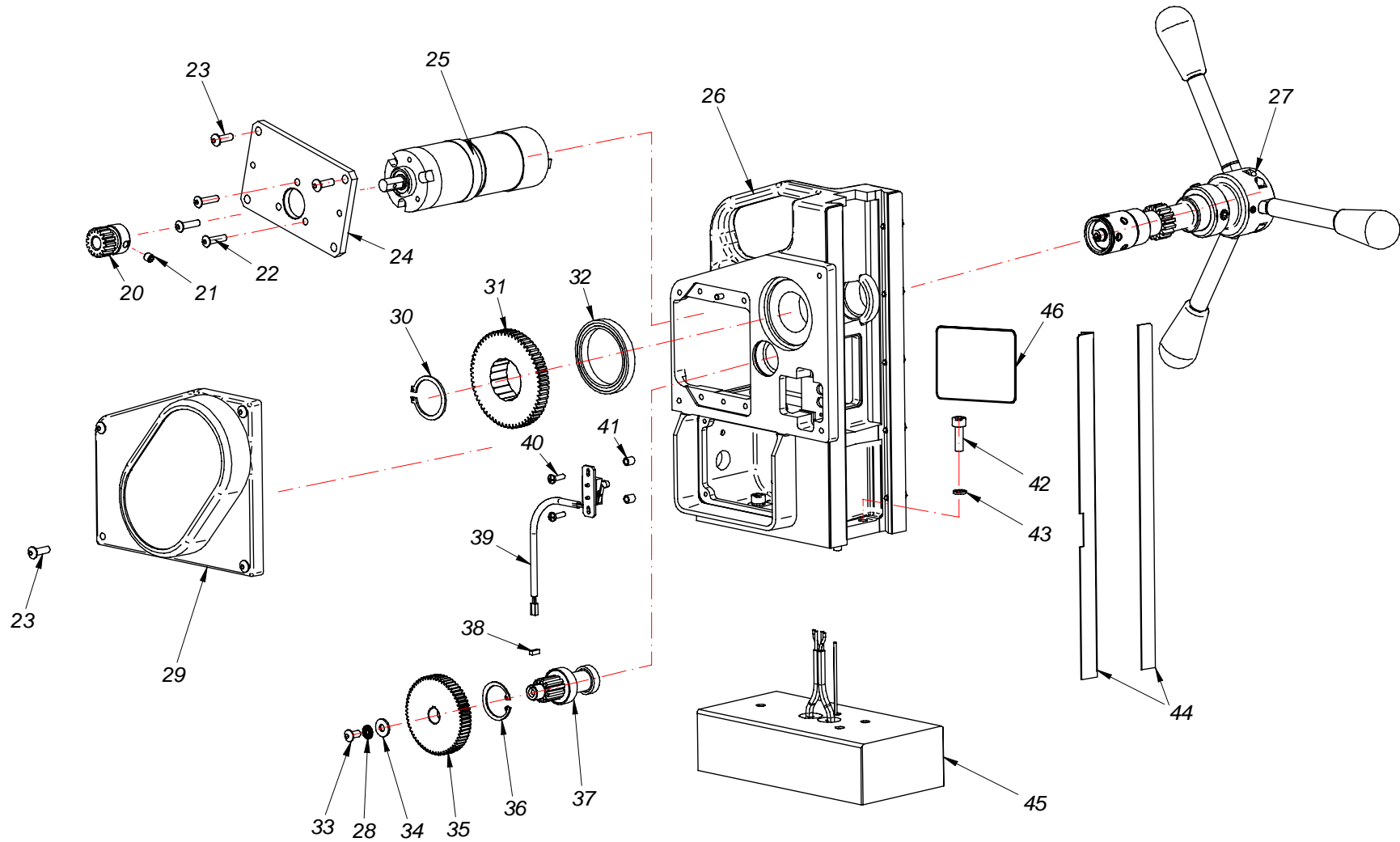


MAB 1500
No. 01



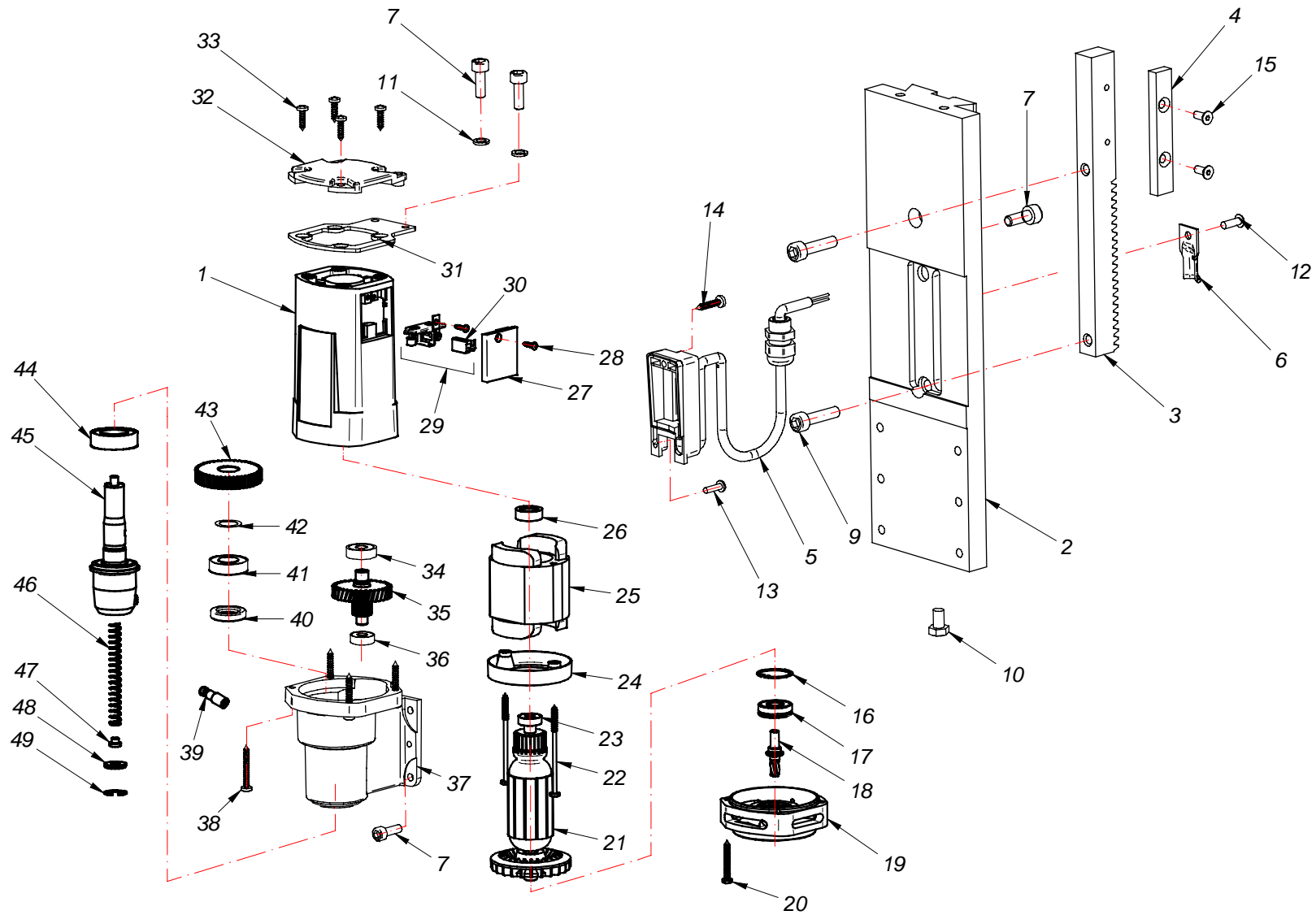
Ständer MAB 1500
No. 02



Item No.	Part.-No.	Denomination
1	60 1500 1	Motor 230 V
1 A	60 1501 1	Motor 110 V
2	60 1170 1	Adjustment rail
3	60 1171 1	Plate
4	60 1172 1	PC board 230 V
4 A	60 1173 1	PC board 110 V
5	60 1174 1	Switch plate complete with switches and PC board 230 V
5 A	60 1175 1	Switch plate complete with switches and PC board 110 V
6	70 1014 1	Magnet switch
7	60 1176 1	Screw for side plate M4 x 10
8	70 1080 1	Actuator 220 V
8 A	70 1093 1	Actuator 110 V
9	60 1177 1	Switch plate front side
10	70 1006 1	Earth screw
11	ZSS 200K	Cooling tube with quick change coupling
12	70 1003 1	Mains cable gland PG 11
13	70 1004 1	Connection cable 220 - 240 V with plug
13 A	70 1041 1	Connection cable 220 - 240 V with English plug
13 B	70 1005 1	Connection cable 110 V (plug on demand)
14	60 1178 1	Distance piece
15	ZKK 101	Cooling tank
16	60 1190 1	Screw M3 x 16
17	60 1180 1	Support bracket
18	ZKK 102	Holder for cooling tank with screws
19	60 1181 1	Chip protection
20	60 1182 1	Gear wheel for motor
21	60 1183 1	Screw M5 x 6
22	60 1184 1	Hexagon socket screw M4 x 15
23	60 1185 1	Hexagon socket screw M5 x 16
24	60 1186 1	Plate for motor
25	60 1187 1	Feed motor
26	60 1188 1	Housing
27	60 1189 1	Gear shaft with handles
28	60 1169 1	Spring circlip 5,3
29	60 1191 1	Switch plate
30	60 1192 1	Circlip ring 30
31	60 1193 1	Gear wheel 60 teeth
32	60 1194 1	Bearing 61809 ZZ
33	60 1195 1	Screw M5 x 10

Item No.	Part.-No.	Denomination
34	60 1196 1	Shim 5,5 / 18,5
35	60 1197 1	Gear wheel 61 teeth
36	60 1198 1	Circlip ring 28
37	60 1199 1	Shaft for gear wheel 12 teeth
38	60 1200 1	Spring 3 x 3 x 8
39	60 1201 1	Stroke limitation cable
40	60 1202 1	Screw M3 x 16
41	60 1203 1	Distance sleeve
42	60 1011 1	Screw M6 x 25
43	60 1002 1	Spring washer 6,3
44	60 1204 1	Guide rail (1 set right / left)
45	60 1205 1	Magnet electric with indicator
46	60 1206 1	Side plate (sticker)

Motor mit Schlitten MAB 1500
No. 03



Item No.	Part.-No.	Denomination
1	50 1297	1 Motor housing
2	50 1298	1 Slide
3	50 1299	1 Tooth track
4	50 1300	1 Side plate
5	50 1301	1 Motor cable unit
6	50 1302	1 Motor cable fastener
7	60 1001	1 Screw M6 x 16
9	60 1011	1 Screw M6 x 25
10	60 1156	1 Hex-head self-tapping screw M6 x 10
11	60 1083	1 Washer for stroke limiter 6,3
12	50 1303	1 Screw M4 x 12
13	50 1304	1 Screw M4 x 14
14	50 1305	1 Screw M4 x 25
15	50 1306	1 Hexagon socket screw M4 x 10
16	50 1307	1 Distance disk
17	50 1308	1 Ball bearing 6201
18	50 1309	1 Armature shaft
19	50 1310	1 Cover of gear box
20	50 1058	1 Screw 4,8 x 45
21	50 1311	1 Armature 230 V
21 A	50 1312	1 Armature 110 V
22	50 1313	1 Screw 4,8 x 85
23	50 1314	1 Ball bearing 627 ZZ
24	50 1315	1 Coil cap
25	50 1316	1 Field coil 230 V
25 A	50 1317	1 Field coil 110 V
26	50 1318	1 Bearing cap
27	50 1319	1 Carbon brush cap
28	50 1320	1 Screw 4 x 13
29	50 1321	1 Carbon brush holder complete
30	50 1457	1 Carbon brush
31	50 1323	1 Motor support bracket
32	50 1324	1 Motor cover
33	50 1325	1 Screw 5 x 20
34	50 1326	1 Ball bearing 629 ZZ
35	50 1327	1 Shaft for gearbox
36	50 1006	1 Ball bearing 608 ZZ
37	50 1328	1 Gear box case
38	50 1329	1 Screw 5 x 60

Item No.	Part.-No.	Denomination
39	ZSS 200N	Brass nipple for quick change coupling ZSS 200
40	50 1246	1 Shaft seal
41	50 1330	1 Ball bearing 6003 ZZ
42	50 1331	1 Shim
43	50 1332	1 Spindle gear 47 teeth
44	50 1333	1 Ball bearing 6004 ZZ
45	50 1334	1 Spindle
46	50 1335	1 Spring
47	50 1336	1 Washer
48	50 1337	1 Shim
49	50 1338	1 Circlip ring