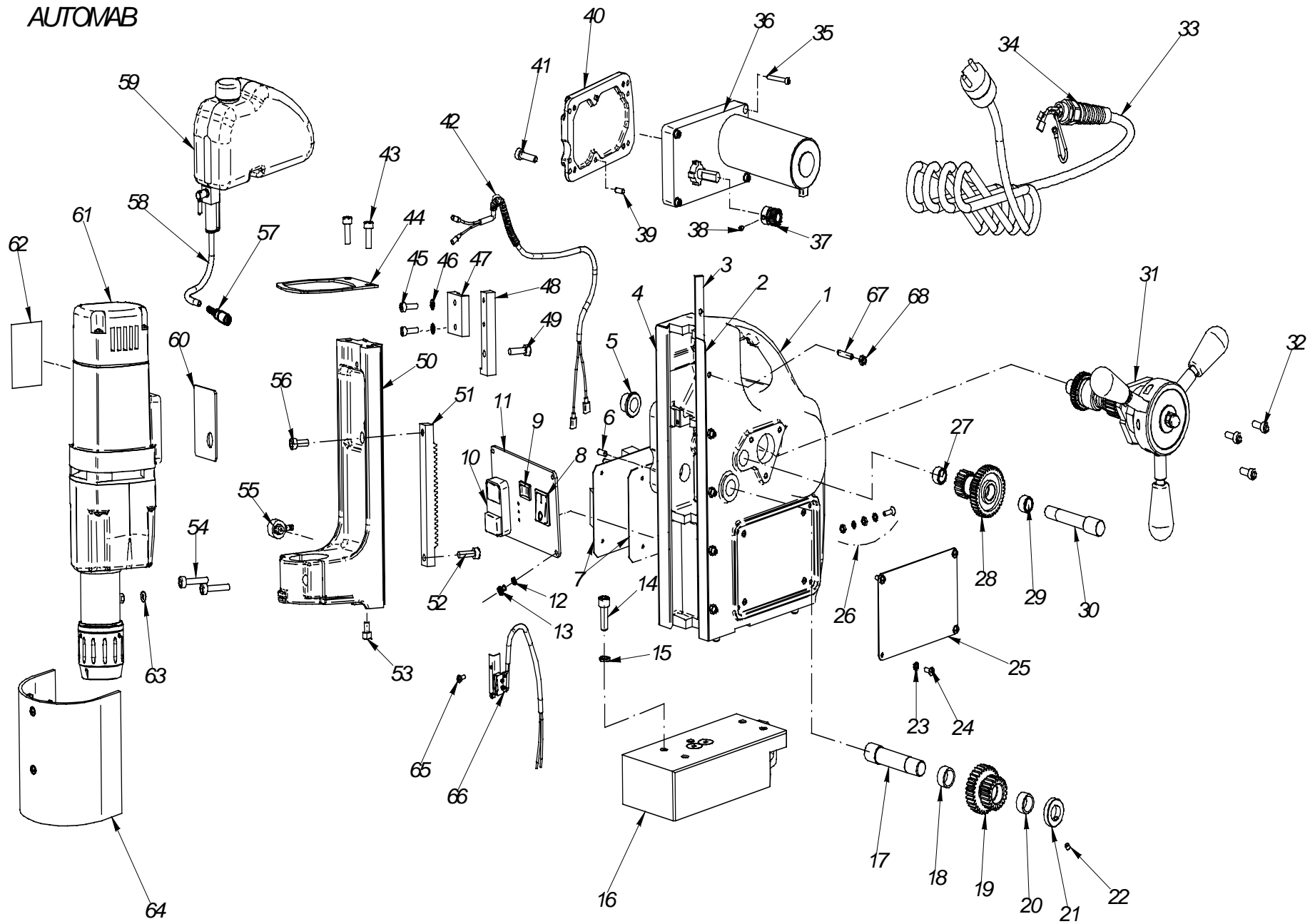


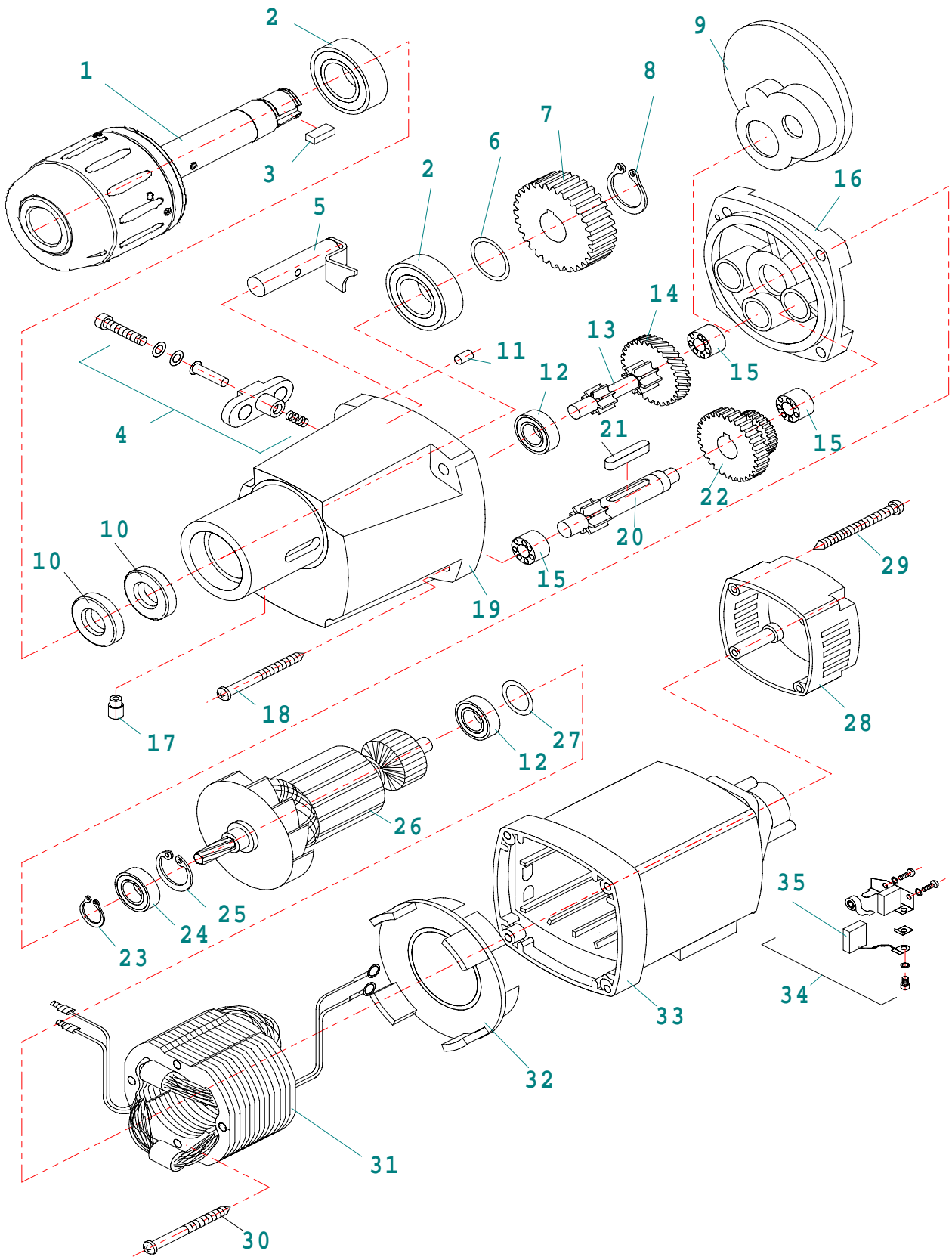
AUTOMAB



| Item No. | Part.-No. | Denomination                                     |                       |
|----------|-----------|--|-----------------------|
| 1        | 60 1122   | 1 Housing  |                       |
| 3        | 60 1123   | 1 Adjustment rail right                          |                       |
| 4        | 60 1124   | 1 Guide rail (1 set right/left) to be glued      |                       |
| 5        | 60 1125   | 1 Self-lubricating bush                          |                       |
| 6        | 60 1126   | 1 Pin 5x12                                       |                       |
| 7        | 60 1127   | 1 PC board 230 V for feed motor 24 V             |                       |
| 7 A      | 60 1128   | 1 PC board 110 V for feed motor 24 V             |                       |
| 7 B      |           | PC board 230 V for feed motor 230 V              | not available anymore |
| 7 C      |           | PC board 110 V for feed motor 110 V              | not available anymore |
| 8        | 70 1014   | 1 Magnet switch                                  |                       |
| 9        | 60 1129   | 1 Feed switch                                    |                       |
| 10       | 70 1011   | 1 Actuator                                       |                       |
| 11       | 70 1100   | 1 Switch plate front side                        |                       |
| 12       | 60 1130   | 1 Spring washer 4,3                              |                       |
| 13       | 60 1052   | 1 Screw for side plate M4x6                      |                       |
| 14       | 60 1062   | 1 Screw M8x25                                    |                       |
| 15       | 60 1057   | 1 Spring washer 8,3                              |                       |
| 16       | 60 1131   | 1 Magnet electric                                |                       |
| 17       | 60 1132   | 1 Shaft  |                       |
| 18       | 60 1133   | 1 bushing  |                       |
| 19       | 60 1134   | 1 Gear wheel block                               |                       |
| 21       | 60 1135   | 1 Fixation ring                                  |                       |
| 22       | 60 1136   | 1 Screw M5x5                                     |                       |
| 23       | 60 1137   | 1 Disk 4,3                                       |                       |
| 24       | 60 1052   | 1 Srew for side plate M4x6                       |                       |
| 25       | 70 1101   | 1 Side plate                                     |                       |
| 26       | 70 1006   | 1 Earth screw, complete                          |                       |
| 27       | 60 1138   | 1 Bushing  |                       |
| 28       | 60 1139   | 1 Gear wheel block                               |                       |
| 30       | 60 1140   | 1 Shaft for gearbox                              |                       |
| 31       | 60 1141   | 1 Gear shaft with handles                        |                       |
| 32       | 60 1142   | 1 Screws for shaft ( 3 pieces) M5                |                       |
| 33       | 70 1004   | 1 Connection cable 220 - 240 V with plug         |                       |
| 33 A     | 70 1041   | 1 Connection cable 220 - 240 V with English plug |                       |
| 33 B     | 70 1005   | 1 Connection cable 110 V (plug on demand)        |                       |
| 34       | 70 1003   | 1 Mains cable gland PG 11                        |                       |
| 35       | 60 1143   | 1 Screw M4x30                                    |                       |
| 36       | 60 1144   | 1 Feed motor 24 V                                |                       |
| 36 A     |           | Feed motor 230 V                                 | not available anymore |

| Item No. | Part.-No. | Denomination  |
|----------|-----------|---|
| 36 B     |           | Feed motor 110 V <span style="float: right;">not available anymore</span> |
| 37       | 60 1145 1 | Gear wheel for feed motor   |
| 38       | 60 1146 1 | Screw M5x6  |
| 41       | 60 1147 1 | Screw M5x20   |
| 42       | 60 1148 1 | Motor connection cable  |
| 43       | 60 1001 1 | Screw M6x16   |
| 44       | 60 1012 1 | Motor support bracket   |
| 45       | 60 1149 1 | Screw M5x20   |
| 46       | 60 1150 1 | Disk  |
| 47       | 60 1151 1 | Protection plate  |
| 48       | 60 1152 1 | Slide limiter   |
| 49       | 60 1153 1 | Screw M5x20   |
| 50       | 60 1154 1 | Slide   |
| 51       | 60 1155 1 | Shaft for gear wheel  |
| 52       | 60 1023 1 | Srew for gear wheel M6x16   |
| 53       | 60 1156 1 | Screw M6x10   |
| 54       | 60 1157 1 | Screw M6x30   |
| 55       | 60 1158 1 | Cooling fluid connection  |
| 56       | 60 1001 1 | Screw M6x16   |
| 57       | 60 1159 1 | Quick change coupling   |
| 58       | 60 1160 1 | Cooling tube  |
| 59       | 60 1161 1 | Cooling tank  |
| 60       | 60 1162 1 | Sealing plate (rubber)  |
| 61       | 50 2000 1 | Motor MAB 2000 complete 230 V   |
| 61 A     | 50 2010 1 | Motor MAB 2000 complete 110 V   |
| 64       | 60 1163 1 | Chip protection   |
| 65       | 60 1164 1 | Screw M3x8  |
| 66       | 60 1165 1 | Stroke limitation cable   |
| 67       | 60 1042 1 | Adjusting srew M5x25 for slide  |
| 68       | 60 1003 1 | Fixing nut M5   |

# AUTOMAB



| Item No. | Part.-No. | Denomination                    |
|----------|-----------|---------------------------------|
| 1        | 50 1295 1 | adaptor KEYLESS                 |
| 1 A      | 50 1296 1 | adaptor ZIA                     |
| 2        | 50 1061 1 | Ball bearing 6203 2RS           |
| 3        | 50 1075 1 | Spring A5x5x12                  |
| 4        | 50 1052 1 | Gear change complete            |
| 5        | 50 1076 1 | Clutch                          |
| 6        | 50 1053 1 | Washer 16 x 22 x 0,2            |
| 7        | 50 1062 1 | Spindle gear 45 teeth           |
| 8        | 50 1072 1 | Circlip ring 15/1               |
| 9        | 50 1077 1 | Shaft seal for grease chamber   |
| 10       | 50 1293 1 | Ball bearing (shaft sealing)    |
| 11       | 50 1029 1 | Pin 4x12                        |
| 12       | 50 1006 1 | Ball bearing 608 2Z             |
| 13       | 50 1042 1 | Shaft with 2 gear wheels        |
| 14       | 50 1054 1 | Intermedium gear wheel 34 teeth |
| 15       | 50 1035 1 | Needle bearing HK 0810          |
| 16       | 50 1073 1 | Shield                          |
| 18       | 50 1023 1 | Screw 4,8 x 50                  |
| 19       | 50 1294 1 | Gear box case                   |
| 20       | 50 1041 1 | Shaft for gear wheel 13 teeth   |
| 21       | 50 1050 1 | Wedge A5x5x28                   |
| 22       | 50 1063 1 | Gear wheel block 34/40 teeth    |
| 23       | 50 1071 1 | Circlip ring 11/1               |
| 24       | 50 1008 1 | Ball bearing 6001 2Z            |
| 25       | 50 1027 1 | Circlip ring 28/1,2             |
| 26       | 50 1065 1 | Armature 220 - 240 V            |
| 26 A     | 50 1066 1 | Armature 110 V                  |
| 27       | 50 1059 1 | Washer 22 x 2,5                 |
| 28       | 50 1069 1 | Cap for motor housing           |
| 29       | 50 1058 1 | Screw 4,8 x 45                  |
| 30       | 50 1003 1 | Screw 3,9 x 60                  |
| 31       | 50 1067 1 | Field coil 220 - 240 V          |
| 31 A     | 50 1068 1 | Field coil 110 V                |
| 32       | 50 1064 1 | Air conducting ring             |
| 33       | 50 1070 1 | Motor housing                   |
| 34       | 50 1056 1 | Carbon brush holder             |
| 35       | 50 1057 1 | Carbon brush                    |