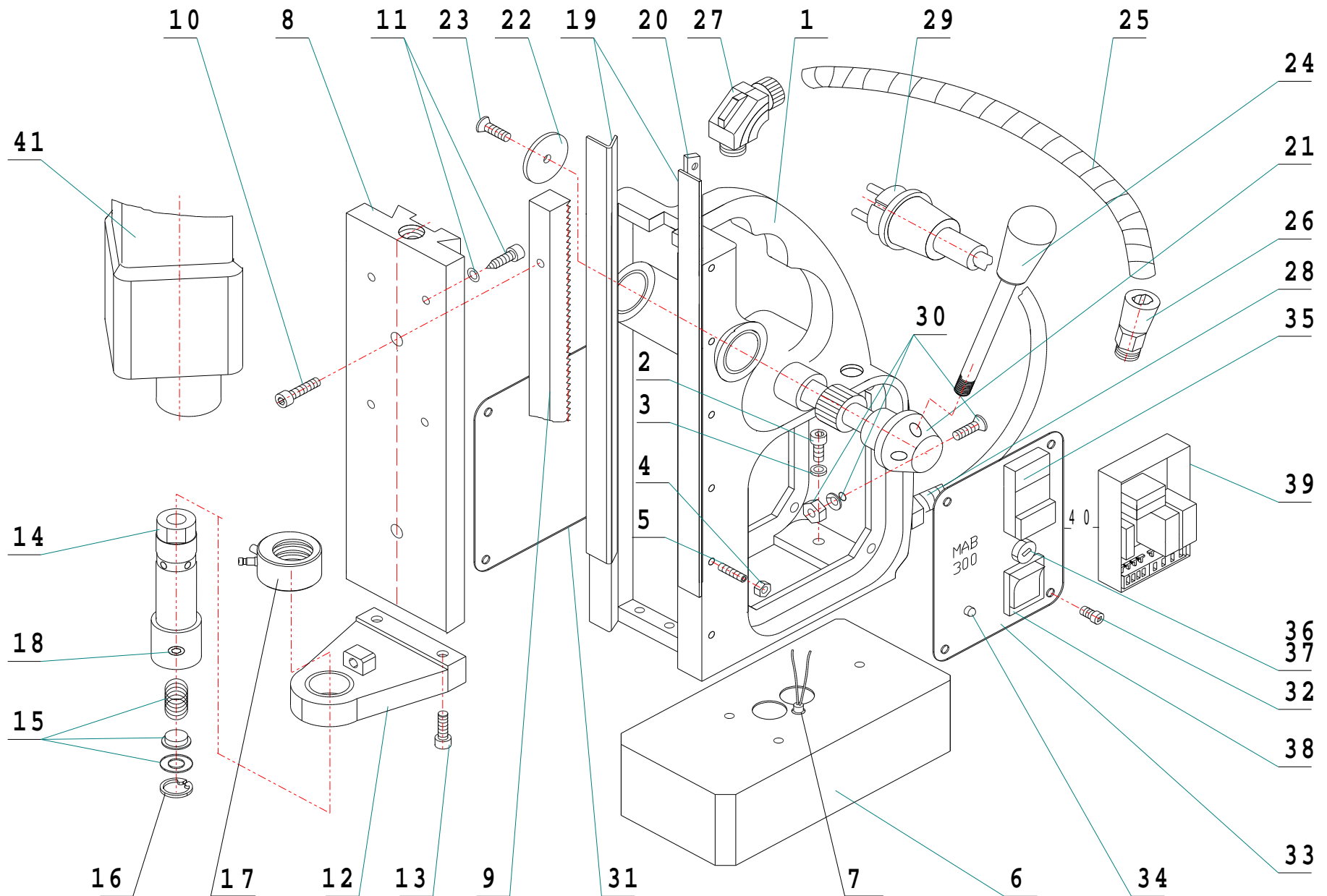


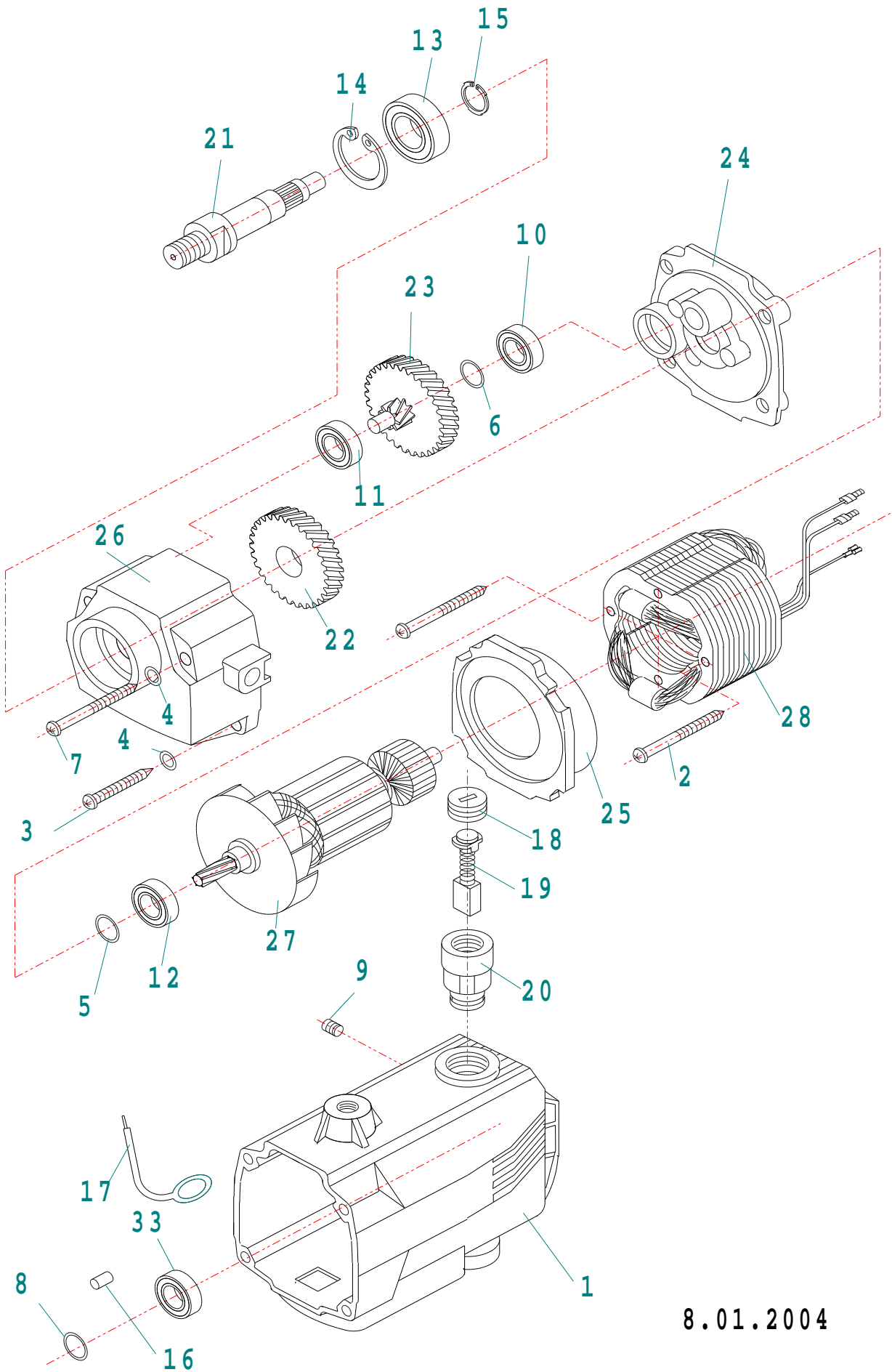
MAB 300



Item No.	Part.-No.	Denomination
1	60 1000 3	Housing 3 holes
1 A	60 1000 2	Housing 3 holes with groove
1 B	60 1000 1	Housing 4 holes
2	60 1001 1	Screw M6x16
3	60 1002 1	Spring washer 6,3
4	60 1003 1	Fixing nut M5
5	60 1004 1	Screw for slide M5
6	60 1005 3	Magnet (electric) for indicator (3 holes)
6 A	60 1005 2	Magnet (electric) without indicator (3 holes)
6 B	60 1005 1	Magnet (electric) without indicator (4 holes)
6 C	60 1005 0	Magnet (electric) without indicator universal
7	60 1006 1	Magnet indicator
8	60 1025 3	Dovetail carriage, asymmetrical, length: 243 mm width: 80 mm hole distance 66 mm
8 A	60 1026 2	Dovetail carriage symmetrical length: 404 mm width: 100 mm
8 B		Slide (until 1995) not available anymore
9	60 1008 1	Tooth rack
10	60 1009 1	Screw M6x20
11	60 1027 1	Screw for motorfixing
12	60 1013 1	Arbor support bracket
13	60 1011 1	Screw M6x25
14	60 1014 2	Arbor complete total length 112 mm
14 A	60 1014 1	Arbor complete total length 103 mm
15	60 1015 1	Spring with washer
16	60 1016 1	Circlip ring 19x1,0 for tool holder
17	60 1017 2	Brass ring for coolant supply with quick change coupling
17 A	60 1017 1	Brass ring for coolant supply (Tube inside \varnothing 6 mm)
18	60 1018 1	Screw M8x8 for core drill fixing
19	60 1019 4	Guide rail (1 set right/left) to be glued from Serial-No. 36659
19 A	60 1019 3	Guide rail (1 set right/left) with groove L: 259
19 B	60 1019 2	Guide rail (1 set right/left) with groove L: 249
19 C	60 1019 1	Guide rail (1 set right/left) with fixing hole
20	60 1020 3	Adjustment rail right
20 A	60 1020 2	Adjustment rail (right) fitting to length: 259 mm
20 B	60 1020 1	Adjustment rail (right) fitting to length: 249 mm
21	60 1021 1	Shaft for gear wheel
22	60 1022 1	Bush for gear wheel
23	60 1023 1	Screw for shaft for gear wheel M6x16
24	60 1024 2	Handle rod with knob
25	70 1000 1	Cable protection tube

Item No.	Part.-No.	Denomination
25 A	70 1019 1	Cable protection tube complete with gland and cable
26	70 1002 1	Gland PG 9
27	70 1002 2	Gland PG 9 90° (Motor)
28	70 1003 1	Mains cable gland PG 11
29	70 1004 1	Connection cable 220 - 240 V with plug
29 A	70 1041 1	Connection cable 220 - 240 V with English plug
29 B	70 1005 1	Connection cable 110 V (plug on demand)
30	70 1006 1	Earth screw
31	70 1020 1	Side plate
32	70 1008 1	Screw M4 x 6
33	70 1021 2	Switch plate for indicator (from Jan. 2002)
34	70 1010 1	LED display for indicator red/green (from January 2002)
35	70 1011 1	Actuator
36	70 1012 1	Fuse holder
37	70 1013 1	Fuse 2A, 5x20, 250 V F, DIN 41 661
38	70 1014 1	Magnet switch
39	70 1015 2	PC board with 3 Relais 230 V
39 A	70 1016 2	PC board with 3 Relais 110 V
40	70 1022 2	Switch plate complete with switches and PC board 230 V
40 A	70 1023 2	Switch plate complete with switches and PC board 110 V
41	50 0300 1	Motor MAB 300 complete 230 V
41 A	50 0310 1	Motor MAB 300 complete 110 V not available

MAB 300



8.01.2004

Item No.	Part.-No.	Denomination
1	30 1000	1 Housing for motor
2	30 1001	1 Screw M5 x 60
3	30 1002	1 Screw M5 x 35
4	30 1003	1 Spring washer 5,3
5	30 1004	1 Washer 16
6	30 1005	1 Washer 8,6 x 1,6
7	30 1006	1 Screw M 5 x 70
8	30 1007	1 Washer 8,1 x 1,3
9	30 1008	1 Screw M5 x 6
10	30 1009	1 Ball bearing 608 VVM
11	30 1010	1 Ball bearing 627 VVM
12	30 1011	1 Ball bearing 609 VVM
13	30 1012	1 Ball bearing 6202 VV
14	30 1013	1 Circlip ring D 35 x 1,5
15	30 1014	1 Circlip ring D 15 x 1,0
16	30 1015	1 Pin 4,65 x 9,4
17	30 1016	1 Cable clamp for carbon brush
18	30 1017	1 Cap for brush holder
19	30 1018	1 Carbon brush
20	30 1019	1 Carbon brush holder
21	30 1020	1 Spindle 1/2" x 20 UN Standard
22	30 1021	1 Gear wheel
23	30 1022	1 Gear wheel
24	30 1023	1 Shield plate
25	30 1024	1 Air conducting shield
26	30 1025	1 Gear box case
27	30 1026	1 Armature 220-240 V
27 A	30 1027	1 Armature 110 V
28	30 1028	1 Field coil 220-240 V
28 A	30 1029	1 Field coil 110 V