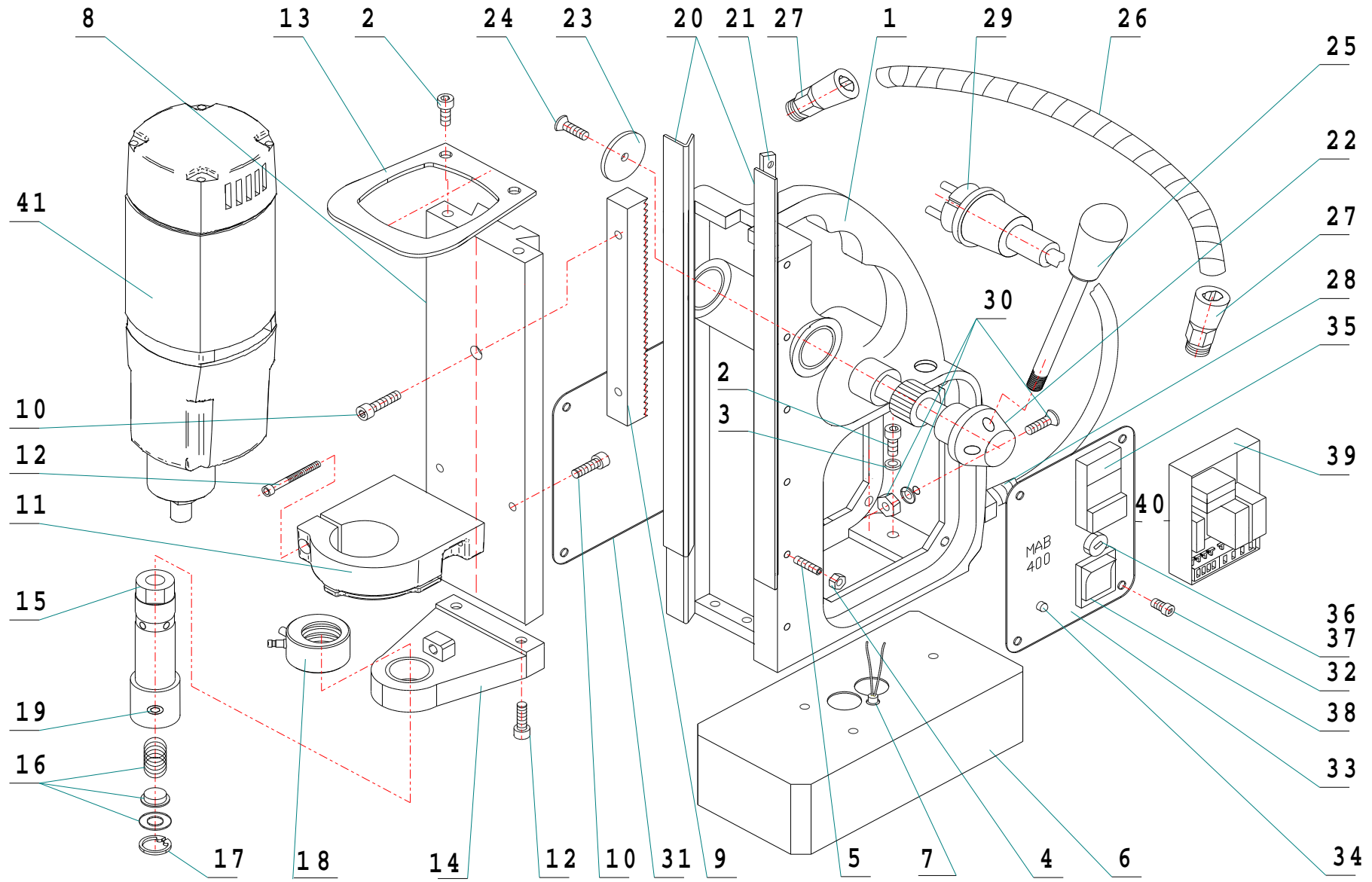


MAB 400

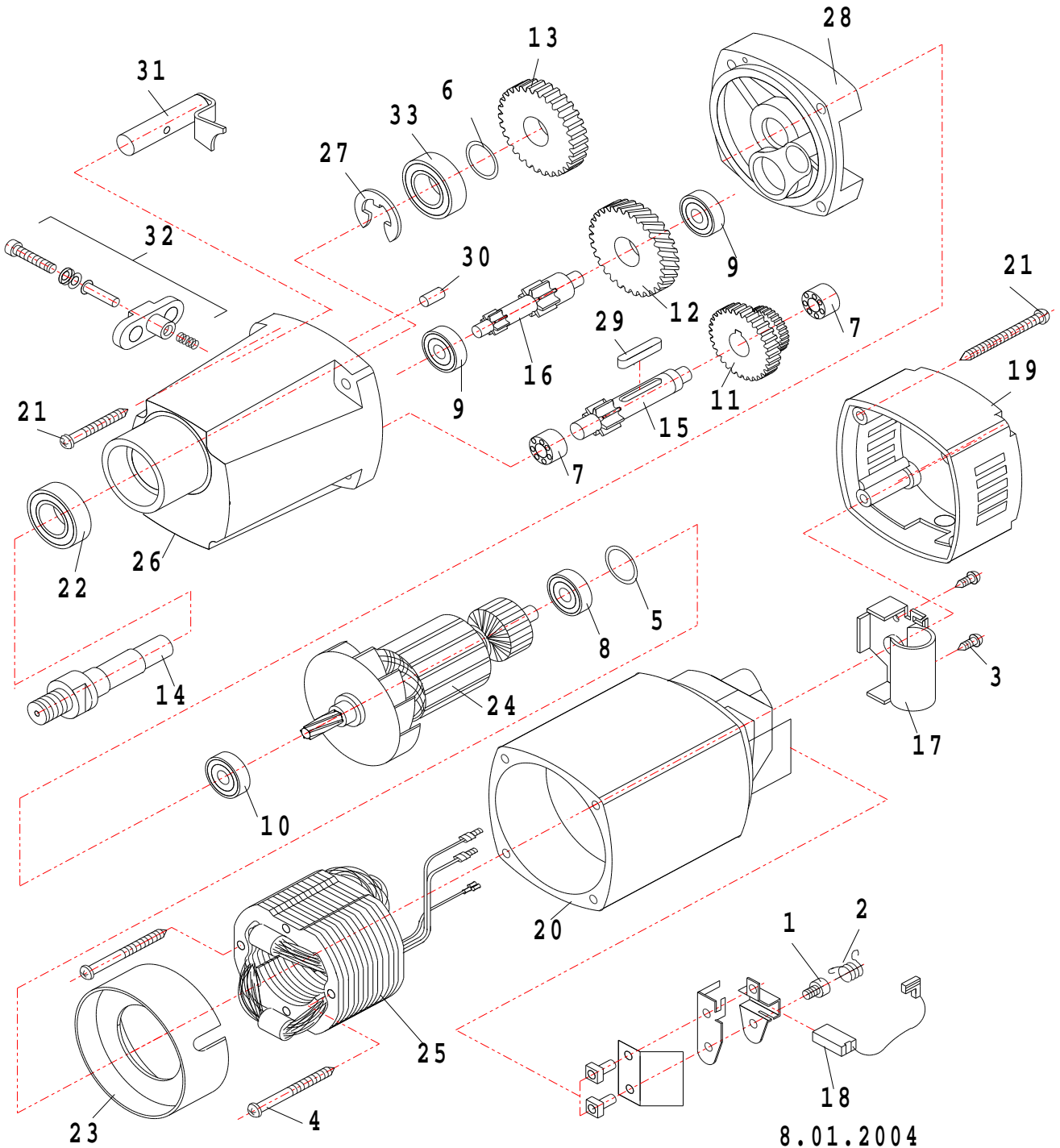


8.01.2004

Item No.	Part.-No.	Denomination
1	60 1000 3	Housing 3 holes
1 A	60 1000 2	Housing 3 holes with groove
1 B	60 1000 1	Housing 4 holes
2	60 1001 1	Screw M6x16
3	60 1002 1	Spring washer 6,3
4	60 1003 1	Fixing nut M5
5	60 1004 1	Screw M5 for slide
6	60 1005 3	Magnet (electric) with indicator (3 holes)
6 A	60 1005 2	Magnet (electric) without indicator (3 holes)
6 B	60 1005 1	Magnet (electric) without indicator (4 holes)
6 C	60 1005 0	Magnet (electric) without indicator universal
7	60 1006 1	Magnet indicator
8	60 1032 3	Dovetail carriage, asymmetrical, length: 281 mm width: 80 mm hole distance 66 mm
8 A	60 1033 2	Dovetail carriage symmetrical length: 281 mm width: 80 mm hole distance 40 mm
8 B		Slide (until 1995) not available anymore
9	60 1008 1	Tooth rack
10	60 1009 1	Screw M6x20
11	60 1010 2	Gear holder motor hole distance 66 mm
11 A	60 1010 1	Gear holder motor hole distance 40 mm
12	60 1011 1	Screw M6x25
13	60 1034 1	Motor support bracket
14	60 1013 1	Arbor support bracket
15	60 1014 2	Arbor complete - total length 112 mm
15 A	60 1014 1	Arbor complete - total length 103 mm
16	60 1015 1	Spring with washer
17	60 1016 1	Circlip ring 19x1,0 for tool holder
18	60 1017 2	Brass ring for coolant supply with quick change coupling
18 A	60 1017 1	Brass ring for coolant supply (Tube inside \varnothing 6 mm)
19	60 1018 1	Screw M8x8 for core drill fixing
20	60 1019 4	Guide rail (1 set right/left) to be glued from Serial No.: 48829
20 A	60 1019 3	Guide rail (1 set right/left) with groove length: 259 mm
20 B	60 1019 2	Guide rail (1 set right/left) with groove length: 249 mm
20 C	60 1019 1	Guide rail (1 set right/left) with fixing hole
21	60 1020 3	Adjustment rail right
21 A	60 1020 2	Adjustment rail (right) fitting to length: 259 mm
21 B	60 1020 1	Adjustment rail (right) fitting to length: 249 mm
22	60 1021 1	Shaft for gear wheel
23	60 1022 1	Disc for shaft for gear wheel
24	60 1023 1	Screw gear wheel M6x16

Item No.	Part.-No.	Denomination
25	60 1024 2	Handle rod with knob
26	70 1000 1	Cable protection tube
26 A	70 1001 1	Cable protection tube complete with gland and cable
27	70 1002 1	Gland PG 9
28	70 1003 1	Mains cable gland PG 11
29	70 1004 1	Connection cable 220 - 240 V with plug
29 A	70 1041 1	Connection cable 220 - 240 V with English plug
29 B	70 1005 1	Connection cable 110 V (plug on demand)
30	70 1006 1	Earth screw
31	70 1036 1	Side plate
32	70 1008 1	Screw M4x6
33	70 1037 2	Switch plate for indicator (from January 2002)
34	70 1010 1	LED display for Indicator red/green (from January 2002)
35	70 1011 1	Actuator
36	70 1012 1	Fuse holder
37	70 1013 1	Fuse 2A, 5x20, 250 V F, DIN 41 661
38	70 1014 1	Magnet switch
39	70 1015 2	PC board with 3 Relais 230 V
39 A	70 1016 2	PC board with 3 Relais 110 V
40	70 1038 2	Switch plate complete with switches and PC board 230 V
40 A	70 1039 2	Switch plate complete with switches and PC board 110 V
41	50 0400 1	Motor MAB 400 complete 230 V
41 A	50 0410 1	Motor MAB 400 complete 110 V

MAB 400



Item No.	Part.-No.	Denomination
1	50 1000 1	Screw
2	50 1001 1	Spring
3	50 1002 1	Screw 4,2 x 13
4	50 1003 1	Screw 3,9 x 60
5	50 1004 1	Washer 16 x 22 x 0,5
6	50 1034 1	Washer 18 x 0,1
7	50 1035 1	Needle bearing HK 0810
8	50 1006 1	Ball bearing 608 2Z
9	50 1007 1	Ball bearing 608
10	50 1008 1	Ball bearing 6001 2Z
11	50 1037 1	Gear wheel assembly 34/28 teeth
12	50 1038 1	Intermedium gear wheel 41 teeth
13	50 1039 1	Spindle gear wheel 31 teeth
14	50 1040 1	Spindle
15	50 1041 1	Shaft for gear wheel 13 teeth
16	50 1042 1	Shaft with 2 gear wheels
17	50 1013 1	Holder for capacitor
18	50 1014 1	Carbon brush 6,3 x 10 x 20
19	50 1019 1	Cap for motor housing
20	50 1020 1	Housing for motor complete with carbon brush holder
21	50 1023 1	Srew 4,8 x 50
22	50 1043 1	Ball bearing 6202 2RS
23	50 1025 1	Air conducting ring
24	50 1044 1	Armature 220 - 240 V
24 A	50 1045 1	Armature 110 V
25	50 1046 1	Field coil 220 - 240 V
25 A	50 1047 1	Field coil 110 V
26	50 1048 1	Gear box case
27	50 1027 1	Circlip ring 28/1,2
28	50 1049 1	Shield plate
29	50 1050 1	Spring A5x5x28
30	50 1029 1	Pin 4x12
31	50 1051 1	Bolt for coupling
32	50 1052 1	Gear change complete
33	50 1250 1	Ball bearing 6001 2RS