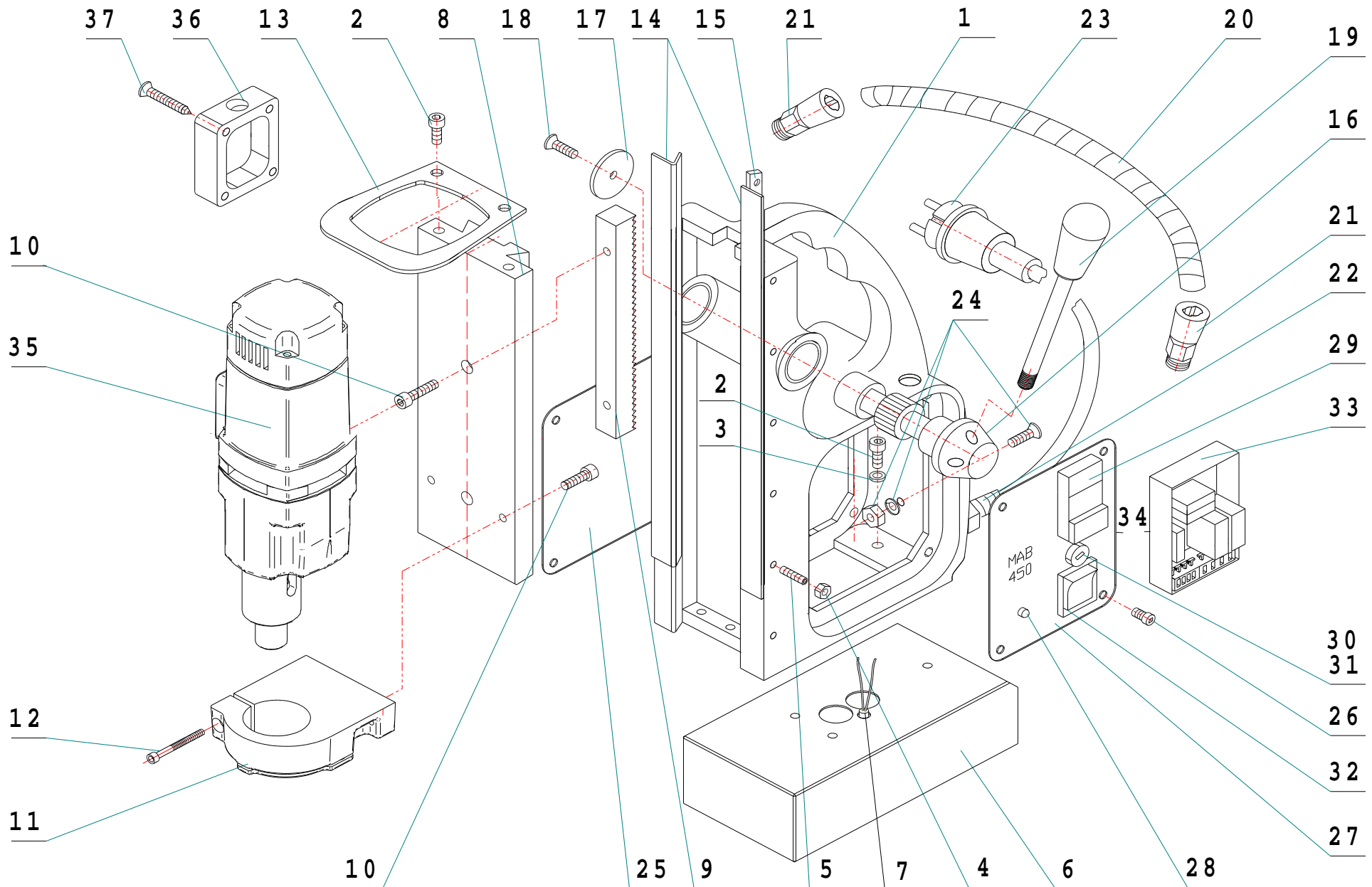


MAB 450



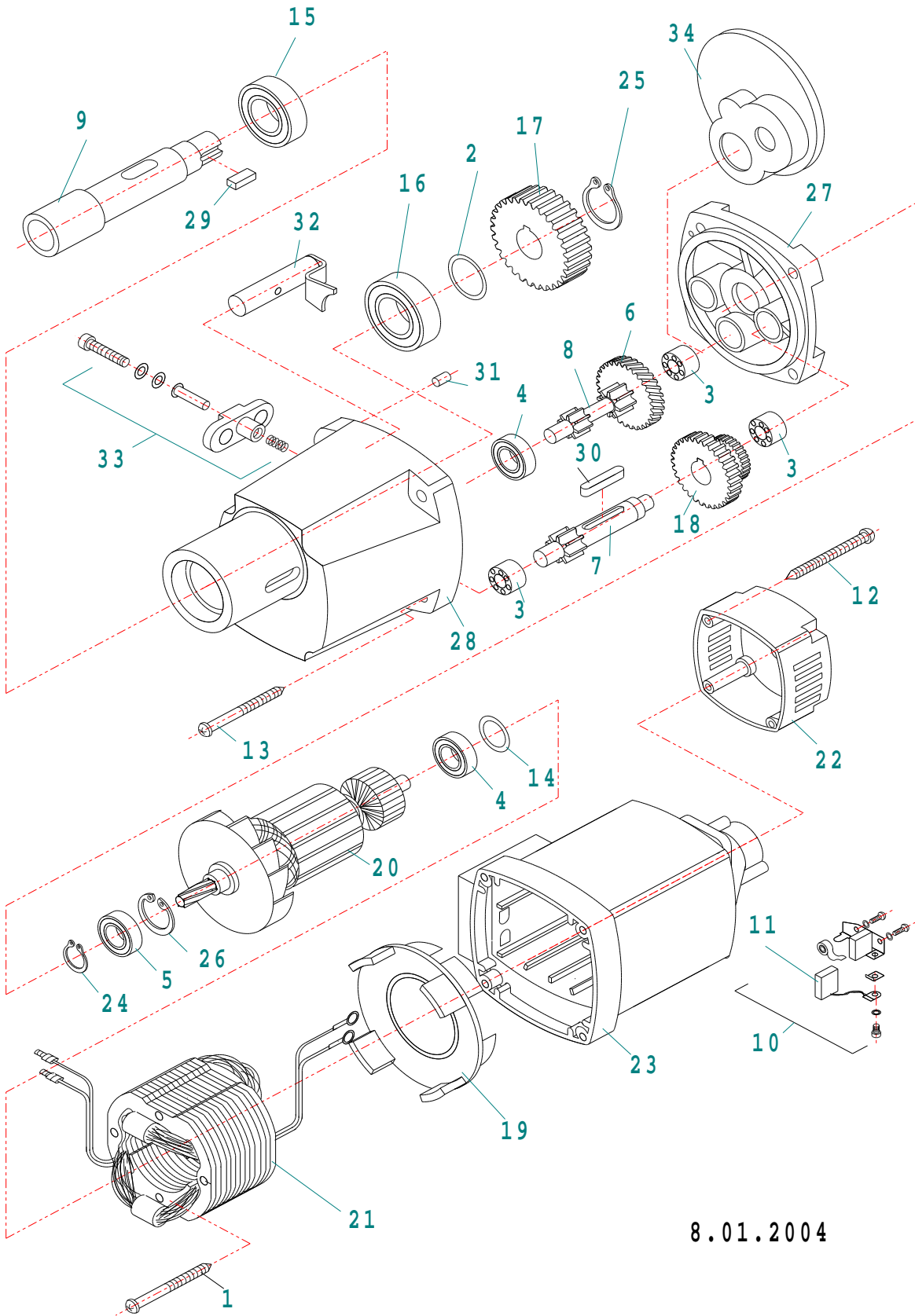
Stand MAB 450



Item No.	Part.-No.	Denomination
1	60 1000 3	Housing 3 holes
1 A	60 1000 2	Housing 3 holes with groove
2	60 1001 1	Screw M6x16
3	60 1002 1	Spring washer 6,3
4	60 1003 1	Fixing nut M5
5	60 1004 1	Screw M5 for slide
6	60 1005 4	Magnet (electric) with indicator+35% magnetic adhesion (3 holes)
6 A	60 1005 3	Magnet (electric) for indicator (3 holes)
6 B	60 1005 2	Magnet (electric) without indicator (3 holes)
7	60 1006 1	Magnet indicator
8	60 1035 1	Dovetail carriage, asymmetrical, length: 281 mm width: 80 mm hole distance 66 mm
9	60 1008 1	Tooth rack
10	60 1009 1	Screw M6x20
11	60 1036 1	Gear box support bracket
12	60 1011 1	Screw M6x25
13	60 1012 1	Motor support bracket
14	60 1019 4	Guide rail (1 set right/left) to be glued from Serial No.: 43569
14 A	60 1019 3	Guide rail (1 set right/left) with groove L: 259 mm
15	60 1020 3	Adjustment rail right
15 A	60 1020 2	Adjustment rail (right) fitting to length: 259 mm
16	60 1021 1	Shaft for gear wheel
17	60 1022 1	Disc for shaft for gear wheel
18	60 1023 1	Screw for shaft for gear wheel M6x16
19	60 1024 2	Handle rod with knob
20	70 1000 1	Cable protection tube
20 A	70 1001 1	Cable protection tube complete with gland and cable
21	70 1002 1	Gland PG 9
22	70 1003 1	Mains cable gland PG 11
23	70 1004 1	Connection cable 220 - 240 V with plug
23 A	70 1041 1	Connection cable 220 - 240 V with English plug
23 B	70 1005 1	Connection cable 110 V (plug on demand)
24	70 1006 1	Earth screw
25	70 1040 1	Side plate
26	70 1008 1	Screw M4x6
27	70 1041 2	Switch plate for indicator (from January 2002)
28	70 1010 1	LED display for indicator red/green (from January 2002)

Item No.	Part.-No.	Denomination
29	70 1011 1	Actuator
30	70 1012 1	Fuse holder
31	70 1013 1	Fuse 2A, 5x20, 250 V F, DIN 41 661
32	70 1014 1	Magnet switch
33	70 1015 2	PC board with 3 Relais 230 V
33 A	70 1016 2	PC board with 3 Relais 110 V
34	70 1043 2	Switch plate complete with switches and PC board 230 V
34 A	70 1044 2	Switch plate complete with switches and PC board 110 V
35	50 0450 1	Motor MAB 450 complete 230 V
35 A	50 0451 1	Motor MAB 450 complete 110 V
36	60 1039 1	Cover for potentiometer
37	60 1040 1	Screw M5x35

MAB 450



8.01.2004

Item No.	Part.-No.	Denominatin
1	50 1003 1	Screw 3,9 x 60
2	50 1053 1	Washer 16 x 22 x 0,2
3	50 1035 1	Needle bearing HK 0810
4	50 1006 1	Ball bearing 608 2Z
5	50 1008 1	Ball bearing 6001 2Z
6	50 1054 1	Intermedium gear wheel 34 teeth
7	50 1041 1	Shaft for gear wheel 13 teeth
8	50 1042 1	Shaft with 2 gear wheels
9	50 1055 1	Spindle
10	50 1056 1	Carbon brush holder
11	50 1057 1	Carbon brush
12	50 1058 1	Screw 4,8 x 45
13	50 1023 1	Screw 4,8 x 50
14	50 1059 1	Washer 22 x 2,5
15	50 1060 1	Ball bearing 6904 2RS
16	50 1061 1	Ball bearing 6203 2RS
17	50 1062 1	Spindle gear 45 teeth
18	50 1063 1	Gear wheel block 34/40 teeth
19	50 1064 1	Air conducting ring
20	50 1065 1	Armature 220 - 240 V
20 A	50 1066 1	Armature 110 V
21	50 1067 1	Field coil 220 - 240 V
21 A	50 1068 1	Field coil 110 V
22	50 1069 1	Cap for motor housing
23	50 1070 1	Motor housing
24	50 1071 1	Circlip ring 11/1
25	50 1072 1	Circlip ring 15/1
26	50 1027 1	Circlip ring 28/1,2
27	50 1073 1	Shield plate
28	50 1074 1	Gear cover case
29	50 1075 1	Spring A5x5x12
30	50 1050 1	Wedge A5x5x28
31	50 1029 1	Pin 4x12
32	50 1076 1	Clutch
33	50 1052 1	Gear change complete
34	50 1077 1	Shaft seal for grease chamber