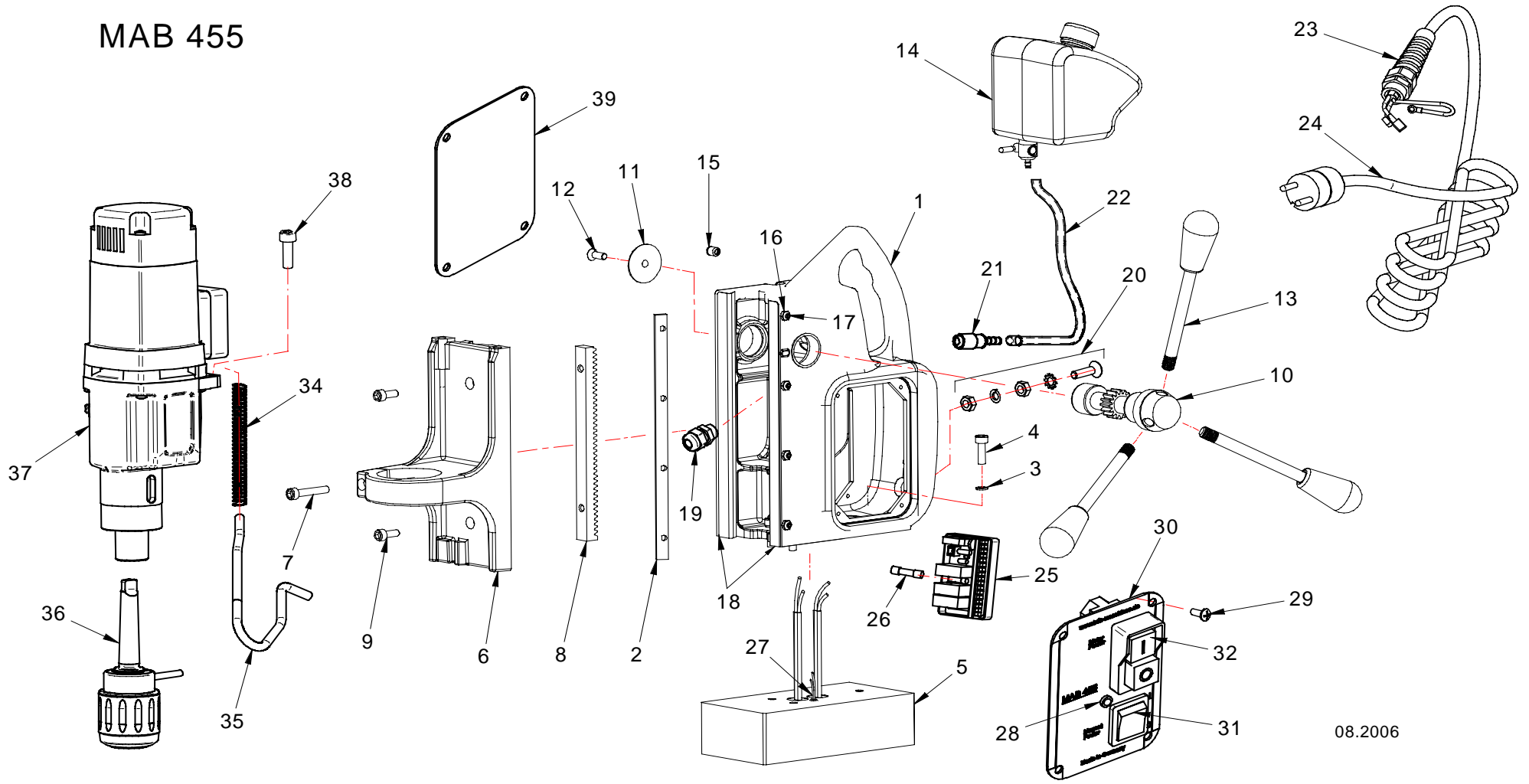


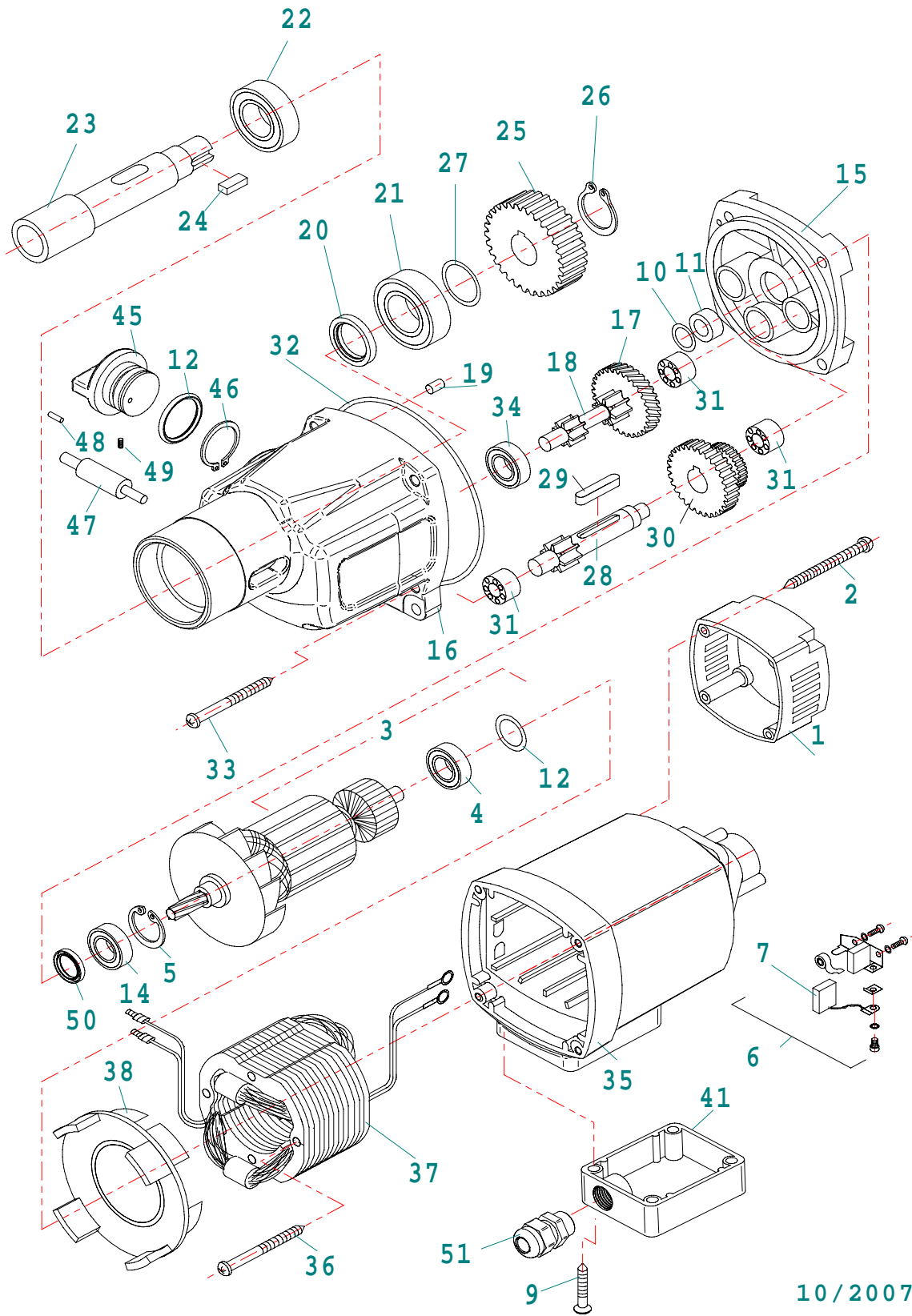
MAB 455



Item No.	Part.-No.	Denomination
1	60 1209 1	Housing 3 holes
2	60 1020 3	Adjustment rail right
3	60 1002 1	Spring washer 6,3
4	60 1001 1	Screw M6 x 16
5	60 1005 4	Magnet (electric) for indicator
6	60 1210 1	Dovetail carriage
7	60 1011 1	Screw M6 x 25
8	60 1008 1	Tooth track
9	60 1009 1	Screw M6 x 20
10	60 1021 1	Shaft for gear wheel
11	60 1022 1	Disc for shaft for gear wheel
12	60 1023 1	Screw for shaft for gear wheel M6 x 16
13	60 1024 2	Handle rod with knob
14	60 1211 1	Plastic tank
15	60 1212 1	Fixing ball
16	60 1003 1	Fixing nut M5
17	60 1004 1	Screw M5 for slide
18	60 1019 4	Guide rail (1 set right/left) to be glued
19	60 1213 1	Gland PG 9 / PG 9
20	70 1006 1	Earth screw
21	60 1214 1	Quick change coupling
22	ZSS200S	Cooling tube
23	70 1003 1	Mains cable gland PG 11
24	70 1004 1	Connection cable 220 - 240 V with plug
24 A	70 1041 1	Connection cable 220 - 240 V with English plug
24 B	70 1005 1	Connection cable 110 V (plug on demand)
25	70 1110 1	PC board with 1 relais 230 V
25 A	70 1111 1	PC board with 1 relais 110 V
26	70 1013 1	Fuse 2A, 5x20, 250 V F, DIN 41 661
27	60 1217 1	Indicator with cable
28	70 1010 1	LED display for indicator red/green
29	70 1008 1	Screw M4x6
30	70 1112 1	Switch plate
31	70 1014 1	Magnet switch
32	70 1080 1	Actuator 230 V
32 A	70 1093 1	Actuator 110 V
34	60 1218 1	Cable protection
35	70 1113 1	Motorcable
36	ZSS 200	KEYLESS ZSS 200

Item No.	Part.-No.	Denomination
37	50 0455 1	Motor MAB 455 complete 230 V
38	60 1046 1	Screw M6 x 30
39	70 1114 1	Side plate
40	70 1115 1	Switch plate complete with switches and PC board 230 V
40 A	70 1116 1	Switch plate complete with switches and PC board 110 V

MAB 455



10/2007

Item No.	Part.-No.	Denomination
1	50 1069 1	Cap for motor housing
2	50 1058 1	Screw 4,8 x 45
3	50 1380 1	Armature 220-240 V
3 A	50 1381 1	Armature 110 V
4	50 1006 1	Ball bearing 608 2Z
5	50 1027 1	SEEGER circlip ring 28/1,2
6	50 1056 1	Carbon brush holder
7	50 1057 1	Carbon brush
8	50 1251 1	Housing for potentiometer complete
9	50 1249 1	Screw M5 x 40
10	50 1299 1	Circlip ring SW 10
11	50 1341 1	Seal bush
12	50 1059 1	Washer 22 x 2,5
14	50 1250 1	Ball bearing 6001 2RS
15	50 1342 1	Shield plate
16	50 1343 1	Gear box case
17	50 1344 1	Intermedium gear wheel 34 teeth
18	50 1345 1	Shaft for 2 gear wheels
19	50 1029 1	Pin 4 x 12
20	50 1346 1	Shaft seal 20 x 35 x 7
21	50 1061 1	Ball bearing 6203 2RS
22	50 1119 1	Ball bearing 6005 2RS
23	50 1347 1	Spindle
24	50 1075 1	Spring A5 x 5 x 12
25	50 1062 1	Spindle gear 45 teeth
26	50 1072 1	SEEGER circlip ring 15/1
27	50 1053 1	Washer 15 x 22 x 0,2
28	50 1041 1	Shaft for gear wheel 13 teeth
29	50 1050 1	Spring A5 x 5 x 28
30	50 1063 1	Gear wheel block 34 / 40 teeth
31	50 1035 1	Needle bearing HK 0810
32	50 1348 1	O-Ring 85 x 1,78
33	50 1023 1	Screw 4,8 x 50
34	50 1006 1	Ball bearing 608 2Z
35	50 1070 1	Motor housing
36	50 1003 1	Screw 3,9 x 60
37	50 1382 1	Field coil 220-240 V
37 A	50 1383 1	Field coil 110 V
38	50 1064 1	Air conducting ring

Item No.	Part.-No.	Denomination
41	50 1088 1	Cover for housing
45	50 1355 1	Gear change
46	50 1356 1	Circlip ring 26/1,2
47	50 1357 1	Clutch
48	50 1358 1	Pin 3 m 6 x 10
49	50 1359 1	Locking pin
50	50 1360 1	Shaft seal KEIV 15 x 21 x 3
51	60 1213 1	Gland PG 9 / PG 9