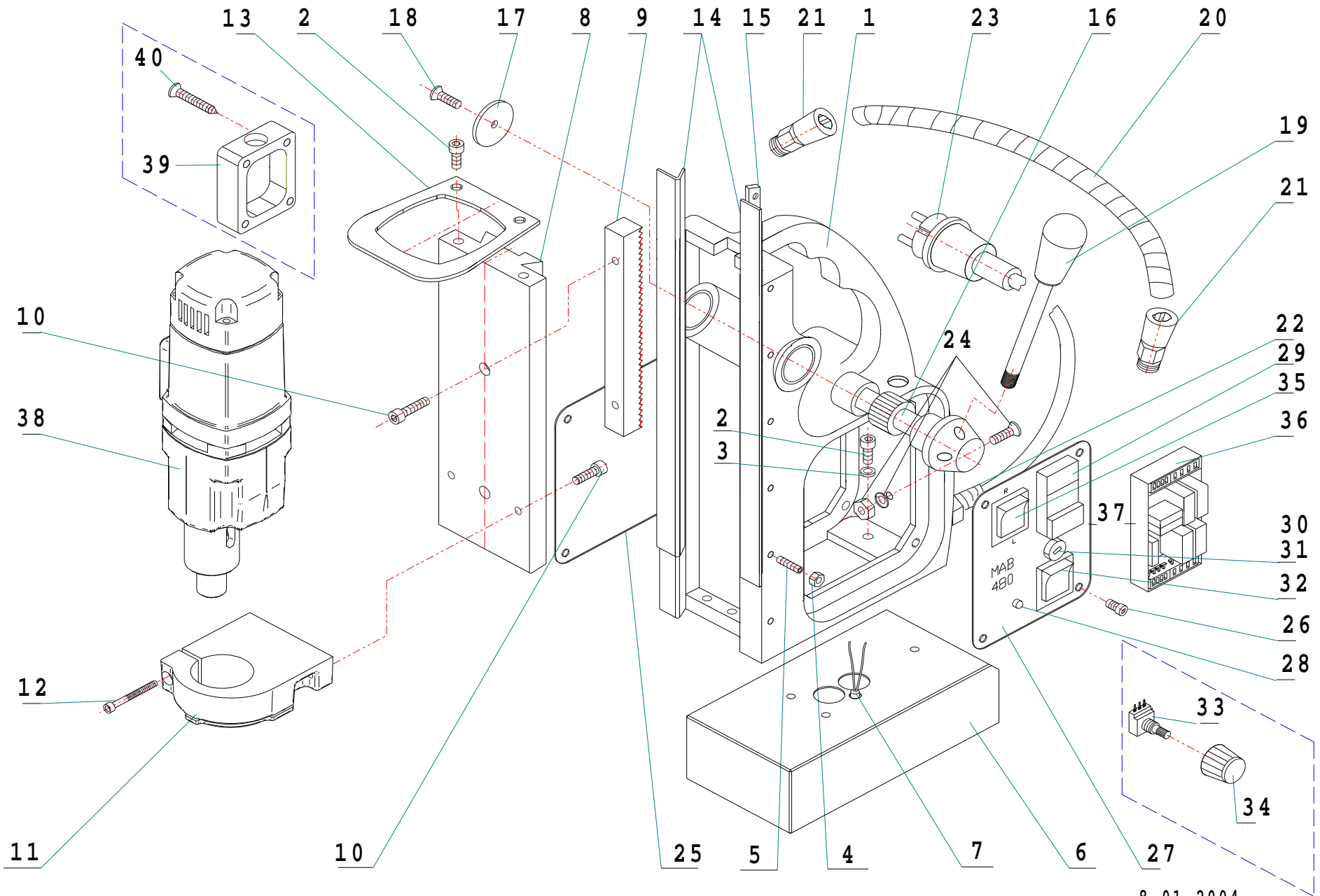


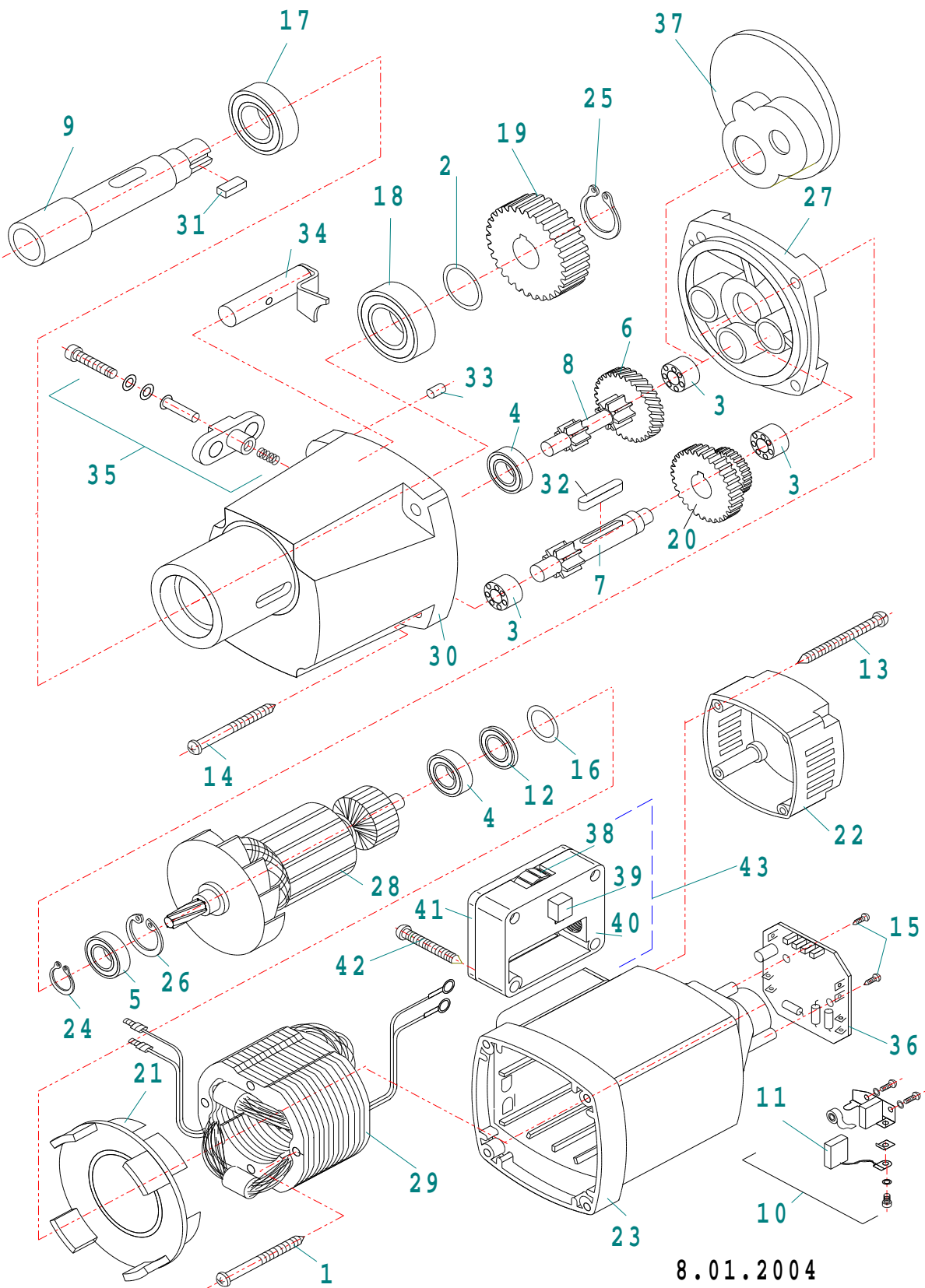
MAB 480



Item No.	Part.-No.	Denomination
1	60 1000 3	Housing 3 holes
2	60 1001 1	Screw M6x16
3	60 1002 1	Washer 6,3
4	60 1003 1	Fixing nut M5
5	60 1004 1	Screw M5 for slide
6	60 1005 4	Magnet (electric) with indicator+35% magnetic adhesion (3 holes)
6 A	60 1005 3	Magnet (electric) for indicator (3 holes)
6 B	60 1005 2	Magnet (electric) without indicator (3 holes)
7	60 1006 1	Magnet indicator
8	60 1035 1	Dovetail carriage, asymmetrical, length: 281 mm width: 80 mm hole distance 66 mm
9	60 1008 1	Tooth rack
10	60 1009 1	Screw M6x20
11	60 1036 1	Gear box support bracket
12	60 1011 1	Screw M6x25
13	60 1034 1	Motor support bracket
14	60 1019 4	Guide rail (1 set right/left) to be glued
15	60 1020 3	Adjustment rail right
16	60 1021 1	Shaft for gear wheel
17	60 1022 1	Disc for shaft for gear wheel
18	60 1023 1	Screw for gear wheel M6x16
19	60 1024 2	Handle rod with knob
20	70 1000 1	Cable protection tube
20 A	70 1045 2	Cable protection tube complete with gland and 4 cables
20 B	70 1045 1	Cable protection tube complete with gland and 6 cables
21	70 1002 1	Gland PG 9
22	70 1003 1	Mains cable gland PG 11
23	70 1004 1	Connection cable 220 - 240 V with plug
23 A	70 1041 1	Connection cable 220 - 240 V with English plug
23 B	70 1005 1	Connection cable 110 V (plug on demand)
24	70 1006 1	Earth screw complete
25	70 1046 1	Side plate
26	70 1008 1	Screw M4x6
27	70 1047 2	Switch plate for indicator (from January 2002)
28	70 1010 1	LED display for indicator red/green (from January 2002)
28 A	70 1033 1	LED display green (until end of 2001)
29	70 1011 1	Actuator
30	70 1012 1	Fuse holder
31	70 1013 1	Fuse 2A, 5x20, 250 V F, DIN 41 661
32	70 1014 1	Magnet switch

Item No.	Part.-No.	Denomination	
33	70 1031 1	Potentiometer 220 kOhm	(until 05/2003)
34	70 1032 1	Switch for potentiometer complete	(until 05/2003)
35	70 1048 1	Rocker switch left / right	
36	70 1049 2	PC board with 5 Relais 230 V	
36 A	70 1050 2	PC board with 5 Relais 110 V	
37	70 1051 2	Switch plate complete with switches and PC board with 5 Relais	230 V
37 A	70 1052 2	Switch plate complete with switches and PC board with 5 Relais	110 V
38	50 0480 1	Motor MAB 480 complete	230 V
38 A	50 0481 1	Motor MAB 480 complete	110 V
39	60 1039 1	Cover for motor connector	(until 05/2003)
40	60 1040 1	Screw M5x35	(until 05/2003)

MAB 480



8.01.2004

Item No.	Part.-No.	Denomination
1	50 1003 1	Srew 3,9 x 60
2	50 1053 1	Washer 15 x 22 x 0,2
3	50 1035 1	Needle bearing HK 0810
4	50 1006 1	Ball bearing 608 2Z
5	50 1250 1	Ball bearing 6001 2RS
6	50 1054 1	Intermedium gear wheel 34 teeth
7	50 1041 1	Shaft for gear wheel 13 teeth
8	50 1042 1	Shaft with 2 gear wheels
9	50 1055 1	Spindle
10	50 1056 1	Carbon brush holder
11	50 1057 1	Carbon brush
12	50 1078 1	Magnet ring
13	50 1058 1	Screw 4,8 x 45
14	50 1023 1	Screw 4,8 x 50
15	50 1079 1	Screw - 2 pieces
16	50 1059 1	Washer 22 x 2,5
17	50 1060 1	Ball bearing 6904 2RS
18	50 1061 1	Ball bearing 6203 2RS
19	50 1062 1	Spindle gear 45 teeth
20	50 1063 1	Gear wheel block 34/40 teeth
21	50 1064 1	Air conducting ring
22	50 1069 1	Cap for motor housing
23	50 1070 1	Motor housing
24	50 1071 1	Circlip ring 11/1
25	50 1072 1	Circlip ring 15/1
26	50 1027 1	Circlip ring 28/1,2
27	50 1073 1	Shield plate
28	50 1080 1	Armature 220 - 240 V
28 A	50 1081 1	Armature 110 V
29	50 1082 1	Field coil 220 - 240 V
29 A	50 1083 1	Field coil 110 V
30	50 1074 1	Gear box case
31	50 1075 1	Spring A5x5x12
32	50 1050 1	Spring A5x5x28
33	50 1029 1	Pin 4x12
34	50 1076 1	Clutch
35	50 1052 1	Gear change, complete
36	50 1084 1	PC board for motor 220 V
36 A	50 1085 1	PC board for motor 110 V
37	50 1077 1	Shaft seal for grease chamber

Item No.	Part.-No.	Denomination
38	50 1086 1	Adjustment wheel (blue) for speed control 2V
39	50 1087 1	Potentiometer for speed control 250 kOhm
40	50 1088 1	Housing for potentiometer
41	50 1089 1	Cover for housing
42	50 1249 1	Screw M5x40
43	50 1251 1	Housing for potentiometer complete