

Coordinate drilling machines



UNIMAX 3 TA semi-automated

Option 5 7 12 22 23 24 36

The semi-automated coordinate drilling machine UNIMAX 3 TA is based on our MAXION drilling machine UNIMAX 3, which is exceedingly successful used on the market since many years. It has been complemented with a cross table driven by a stepper motor of the installation size MF-3 with ball bearing screws. After reaching the drilling position the appropriate drilling-, countersink- and thread cutting processes can be accomplished by means of the manual feed. After finishing the drilling process the next cutting position will be approached automatically.

Constant capacity	25 mm in St 60
Thread Cutting Performance	M 20
Spindle travel (continuously variable)	80 - 1.440 min ⁻¹ 180 - 3.200 min ⁻¹
Spindle	MK 3
Engine performance	0,8 / 1,5 KW
Drilling depth	125 mm
Distance spindle/table	60 bis 320
Throat	260 mm
Table surface	600 x 240 mm
Maximal table load	75 kg
Traverse paths	x = 340 mm y=160 mm
Number of T-slots	3 Stk. DIN 650 12 mm
Rapid traverse speed	3 m / min
Positioning accuracy	+/- 0,02 mm
Repeat accuracy	+/- 0,01 mm

Essential pieces of the machine concept:
 > fast creation of accurate drilling templates
 > no need of calculating coordinates manually
 e.g. for pitch circle drillings
 > scribing is not necessary

MAXBOMAT 25 automated

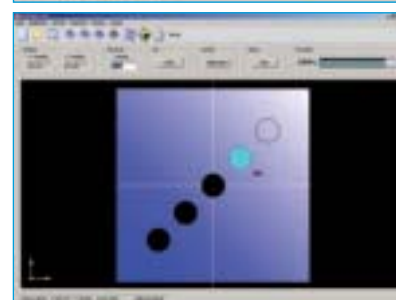
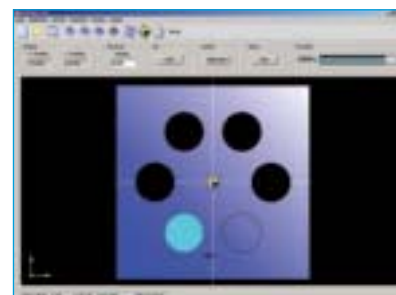
Option 4 5 7 12 22 23 24 36

MAXBOMAT 25 (ST)
 - An all-purpose computerised coordinate drilling machine. Easy programming of cross table by using accustomed Windows user interface, there is no need of CNC-knowledge. Predefined hole patterns like e.g. rows of holes, hole circles or breadboards are assuring short programming times. The profile rail-guided cross table is moved via servo motor and a backlash-free ballscrew with high accuracy and dynamics.

Constant capacity	25 mm in St 60
*Thread capacity	M 20 (Option 4)
Spindle travel (continuously variable)	80 - 1.400 min ⁻¹ 120 - 2.100 min ⁻¹ 160 - 2.800 min ⁻¹
* Spindle	MK 3 / SK 30 (Option)
Engine performance	0,8 / 1,5 KW
Drilling depth	125 mm
Distance spindle/table	60 bis 320
Throat	260 mm
Table surface	600 x 240 mm
Maximal table load	75 kg
Traverse paths	x = 340 mm y=160 mm
Number of T-slots	3 Stk. DIN 650 12 mm
Rapid traverse speed	6 m / min
Positioning accuracy	+/- 0,02 mm
Repeat accuracy	+/- 0,01 mm
Automatic drill feed	0,1 - 0,16 - 0,25 mm / U

Price, further installation sizes, options and enclosure on request.

Same advances as UNIMAX 3 TA
 > additional: drill feed starts automatically after reaching desired position



Inputs will be made by using the Windows user interface. There is no need of CNC-knowledge. Entered data is immediately apparent on the display. By putting in only little data you are able to calculate automatically the exact position of e.g. pitch circle drillings or certain hole patterns. This will be displayed as well as the progress of machining. Programmes appointed once can be stored on data mediums and, if necessary, be diversified later.